

AIRNET

Product Catalog

Aluminum + Stainless-Steel
Piping System



Performance You Demand. Reliability You Trust.™

quincycompressor.com

Aluminum Product Information	5
Aluminum Piping	
Blue Piping: Compressed Air & Vacuum Systems.....	6
Green Piping: Inert Gas Systems.....	6
S-Bend Piping: Compressed Air & Vacuum Systems.....	6
Aluminum Fittings	
Equal Unions.....	7
Elbows.....	7-8
Equal Tees.....	8
Reducing Tees.....	9
Reducing Connections.....	10
Reducing Unions.....	10
Nipple Sockets NPT.....	10-11
Union & Nut Adapter Female NPT.....	11-12
Wall Mounted Manifolds.....	12
Quickdrops & Saddle Clamps.....	13
End Caps.....	14
Isolation Valves & Accessories.....	15-16
Flanges & Accessories.....	17
Aluminum Accessories	
Conductivity Accessories.....	18-19
Pipe Fittings & Hoses.....	19-20
Reducing Bushing.....	21
Hoses Assembly.....	21
Mounting Solutions.....	22
Clamps & Protection Straps.....	23
Labels.....	23
Pipe Clips.....	24-25
Hangers.....	25-26
Aluminum Tools	
Installation Tools.....	27-30
Point of Use	
Accessories.....	31-32
Aluminum Sizing Chart	33-37
Aluminum Installation & Assembly Guide	38-58

Stainless Steel Product Information	60
Stainless Steel Piping	
304L Steel Piping	61
316L Steel Piping	61
Stainless Steel Fittings	
Quick Drop / Saddle Clamps.....	62
Swan Neck	62
Elbows.....	62-63
Equal Tees.....	63
Reducing Tees.....	64
Reducing Tee Female NPT	64
Equal Unions	65
Nipple Socket Male NPT	66
Nipple Socket Female NPT	67
End Cap	67
Wall Mounted Manifold	68
Reducing Union.....	68
Adapter Union Female NPT	68
DIN Flanges	69
ANSI Flanges.....	69
Flange Gaskets.....	70
Isolation Valves.....	71
Compensator	71
Stainless Steel Accessories	
Pipe Clip UNC.....	72
Spare / Replacement O-Rings	72
Stainless Steel Tools	
Installation Tools.....	73
Stainless Steel Sizing Chart	74-79
Stainless Steel Installation & Assembly Guide	80-92
AIRnet Warranty	93-95



Aluminum Piping Products



Aluminum Product Information



AIRnet is a reusable aluminium piping system designed in line with ASME B31.1 / B31.3 to deliver a fast, easy, and reliable distribution network for Compressed Air, Nitrogen, and Vacuum.



PIPES 20 (¾") - 25 (1") - 40 (1 ½") - 50 (2") - 63 (2 ½") - 80 (3") - 100 (4") - 158 (6") MM		
Applications	Compressed Air and Vacuum	Standard
Additional Gasses	Nitrogen, Helium, Argon, Neon, Xenon and Krypton	
Material	Extruded aluminum alloy 6063 T5	ASTM B241
Safety Factor	4 for all diameters (burst pressure)	
Working Pressure	Max 232 psig	Calculating according to ASME B3.1
Working Temperature	-4°F to 176°F	
Vacuum Level	0.189 psia (29.5 HgV)	
Dewpoint	Lowest allowable pressure dewpoint is - 94°F	
Outside Treatment	Polyester powder paint (QUALICOAT certified)	
Inside Treatment	Chrome free conversion treatment	
Colors	Blue RAL 5012 and Green RAL 6018 (only ¾"- 1")	



FITTINGS 20 (¾") - 25 (1") - 40 (1 ½") - 50 (2") MM (PF SERIES)		
Connection	Push to fit technology	Standard
Materials	Engineered polymer PA6 - GF30 fiberglass reinforcement Aluminium high pressure die casting EN AC-46100, similar to A03830 Wrought aluminium alloy 6082 Wrought aluminium alloy EN AW-6082	ASTM B85 / EN 1706
Seal Fittings	NBR 70 Sh A (PTFE coating on pipe seal)	ASTM B221



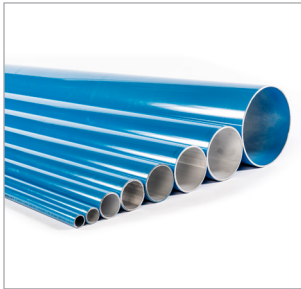
FITTINGS 63 (2 ½") - 80 (3") MM (BLACK SERIES)		
Connection	Torque to grip technology	Standard
Materials	Aluminium high pressure die casting EN AC-46100, similar to A03830 Aluminium permanent mold casting EN AC-43100, similar to A13600 Wrought aluminium alloy 6082	ASTM B85 / EN 1706 ASTM B85 / EN 1706 ASTM B221
Seal Fittings	NBR 70 Sh A	ASTM B221



FITTINGS 100 (4") MM		
Connection	Bolt clamp technology	Standard
Materials	Aluminum permanent mold casting ENAC-43100, similar to A13600 High yield strength steel for cold forming Grade 50	ASTM B85 / EN 1706 ASTM A572
Seal Fittings	NBR 70 Sh A	



FITTINGS 158 (6") MM		
Connection	Bolt clamp technology	Standard
Materials	Aluminum permanent mold casting ENAC-43100, similar to A13600 Stainless Steel 304	ASTM B85 / EN 1706 AISI 304
Seal Fittings	NBR 70 Sh A	



Blue Piping: Compressed Air & Vacuum Systems

Part Number	AIRnet Ø (mm)	AIRnet Ø (in)	L (m)	L (ft)
2811 1063 01	20	3/4"	2.85	9.35
2811 1000 01	20	3/4"	5.70	18.70
2811 2063 01	25	1"	2.85	9.35
2811 2000 01	25	1"	5.70	18.70
2811 4063 01	40	1 1/2"	2.85	9.35
2811 4000 01	40	1 1/2"	5.70	18.70
2811 5063 01	50	2"	2.85	9.35
2811 5000 01	50	2"	5.70	18.70
2811 6000 01	63	2 1/2"	5.70	18.70
2811 7000 01	80	3"	5.70	18.70
2811 8000 00	100	4"	5.70	18.70
2811 9000 01	158	6"	5.70	18.70



Green Piping: Inert Gas Systems

Part Number	AIRnet Ø (mm)	AIRnet Ø (in)	L (m)	L (ft)
2811 1061 01	20	3/4"	5.70	18.70
2811 2061 01	25	1"	5.70	18.70

*Contact Factory for Larger Diameters



S-Bends Piping: Compressed Air & Vacuum Systems

Part Number	Pack Quantity	AIRnet Ø (mm)	AIRnet Ø (in)	L (m)	L (ft)
2811 1067 05	05	20	3/4"	440	1.44
2811 2067 05	05	25	1"	460	1.50



Equal Unions

Part Number	AIRnet Ø (mm)	AIRnet Ø (in)
2811 1002 80	20	3/4"
2811 2002 80	25	1"
2811 4002 80	40	1 1/2"
2811 5002 80	50	2"
2811 6002 80	63	2 1/2"
2811 7002 80	80	3"
2810 8802 00	100	4"
2810 9002 00	158	6"



90° Elbows

Part Number	AIRnet Ø (mm)	AIRnet Ø (in)
2811 1003 80	20	3/4"
2811 2003 80	25	1"
2811 4003 80	40	1 1/2"
2811 5003 80	50	2"
2811 6003 80	63	2 1/2"
2811 7003 80	80	3"
2810 8003 00 *	100	4"
2810 9003 00 *	158	6"

Products marked with (*) require 2 additional Equal Unions.

45° Elbows



Part Number	AIRnet Ø (mm)	AIRnet Ø (in)
2811 1004 80	20	3/4"
2811 2004 80	25	1"
2811 4004 80	40	1 1/2"
2811 5004 80	50	2"
2811 6004 80	63	2 1/2"
2811 7004 80	80	3"
2810 8004 00 *	100	4"
2810 9004 00 *	158	6"

Products marked with (*) require 2 additional Equal Unions.

Equal Tees



Part Number	AIRnet Ø (mm)	AIRnet Ø (in)
2811 1005 80	20	3/4"
2811 2005 80	25	1"
2811 4005 80	40	1 1/2"
2811 5005 80	50	2"
2811 6005 80	63	2 1/2"
2811 7005 80	80	3"
2810 8005 00 *	100	4"
2810 9005 00 *	158	6"

Products marked with (*) require 3 additional Equal Unions.



Reducing Tees

Part Number	AIRnet Ø (mm)	AIRnet Ø (in)	Reduced Thread Outlet Ø (mm)	Reduced Thread Outlet Ø (in)
2811 2107 80	25	1"	20	3/4"
2811 4107 80	40	1 1/2"	20	3/4"
2811 4207 80	40	1 1/2"	25	1"
2811 5107 80	50	2"	20	3/4"
2811 5207 80	50	2"	25	1"
2811 5407 80	50	2"	40	1 1/2"
2811 6507 81	63	2 1/2"	50	2"
2811 7607 80	80	3"	63	2 1/2"
2810 8507 00 *	100	4"	50	2"
2810 8607 00 *	100	4"	63	2 1/2"
2810 8707 00 *	100	4"	80	3"
2810 9707 00 *	158	6"	80	3"
2810 9807 00 **	158	6"	100	4"

Products marked with (*) require 2 additional Equal Unions.

Products marked with (**) require 3 additional Equal Unions.



Reducing Tees Female NPT

Part Number	AIRnet Ø (mm)	AIRnet Ø (in)	Reduced Thread Outlet Ø (in)
2811 0009 80	20	3/4"	0.38"
2811 1009 80	20	3/4"	1/2"
2811 2009 80	25	1"	1/2"
2811 2109 80	25	1"	3/4"
2811 4209 80	40	1 1/2"	1"
2811 5209 80	50	2"	1"
2811 6509 80	63	2 1/2"	2"
2811 7609 80	80	3"	2 1/2"
2811 7709 80	80	3"	3"
2810 8209 00 *	100	4"	1"
2810 9209 00 *	158	6"	1"

Products marked with (*) require 2 additional Equal Unions.



Reducing Connections

Part Number	AIRnet Ø (mm)	AIRnet Ø (in)	Reduced AIRnet Ø (mm)	Reduced AIRnet Ø (in)
2811 6462 80	63	2 1/2"	40	1 1/2"
2811 7462 80	80	3"	40	1 1/2"
2811 7562 80	80	3"	50	2"



Reducing Unions

Part Number	AIRnet Ø (mm)	AIRnet Ø (in)	Reduced AIRnet Ø (mm)	Reduced AIRnet Ø (in)
2811 2121 80	25	1"	20	3/4"
2811 4221 80	40	1 1/2"	25	1"
2811 5421 80	50	2"	40	1 1/2"
2811 6521 81	63	2 1/2"	50	2"
2811 7621 80	80	3"	63	2 1/2"
2810 8721 00 *	100	4"	80	3"
2810 9821 00 **	158	6"	100	4"

Products marked with (*) require 1 additional Equal Union.

Products marked with (**) require 2 additional Equal Unions.



Nipple Socket Female NPT

Part Number	Description	AIRnet Ø (mm)	AIRnet Ø (in)	Threaded Outlet Ø (in)
2811 6620 80	Nipple Socket NPT Female Aluminum	63	2 1/2"	2 1/2"



Nipple Sockets Male NPT

Part Number	AIRnet Ø (mm)	AIRnet Ø (in)	Threaded Outlet Ø (in)
2811 1018 80	20	3/4"	1/2"
2811 1118 80	20	3/4"	3/4"
2811 2118 80	25	1"	3/4"
2811 2218 80	25	1"	1"
2811 4318 80	40	1 1/2"	1 1/4"
2811 4418 80	40	1 1/2"	1 1/2"
2811 5418 80	50	2"	1 1/2"
2811 5518 80	50	2"	2"
2811 6518 80	63	2 1/2"	2"
2811 6618 80	63	2 1/2"	2 1/2"
2811 7618 80	80	3"	2 1/2"
2811 7718 80	80	3"	3"



Union Adapter Female NPT

Part Number	AIRnet Ø (mm)	AIRnet Ø (in)	Outlet Ø (mm)	Outlet Ø (in)
2811 1114 80	20	3/4"	20	3/4"
2811 2214 80	25	1"	25	1"
2811 4414 80	40	1 1/2"	25	1"
2811 5514 80	50	2"	50	2"
2811 6614 80	63	2 1/2"	63	2 1/2"
2811 7714 80	80	3"	8"	3"



Nut Adapter Female NPT

Part Number	AIRnet Ø (mm)	AIRnet Ø (in)	Threaded Outlet Ø (in)
2811 0020 80	20	3/4"	3/8"
2811 1020 80	20	3/4"	1/2"
2811 2020 80	25	1"	1/2"
2811 2120 80	25	1"	3/4"
2811 4220 80	40	1 1/2"	1"
2811 5420 80	50	2"	1 1/2"
2811 5520 80	50	2"	2"
2811 6520 80	63	2 1/2"	2"
2811 7620 80	80	3"	2 1/2"
2811 7720 80	80	3"	3"



Wall Mounted Manifold Male NPT

Part Number	Description	Threaded Inlet Ø (in)	Threaded Outlet Ø (in)
2811 0026 80	Wall Mounted Nipple NPT Male x NPT Female	1/2"	1/2"
2811 1026 80	Wall Mounted Nipple NPT Male x NPT Female	3/4"	1/2"



Wall Mounted Manifold

Part Number	Description	AIRnet Ø (mm)	AIRnet Ø (in)	Threaded Outlet Ø (in)
2811 0075 02	Plugs 1/2" (2 pack)	20	3/4"	1/2"
2811 1024 80	3 Port Wall Mounted Manifold	20	3/4"	1/2"
2811 1041 80	1 Port Wall Mounted Manifold	20	3/4"	1/2"
2811 2024 80	3 Port Wall Mounted Manifold	25	1"	1/2"
2811 2041 81	1 Port Wall Mounted Manifold	25	1"	1/2"



Quickdrops

Part Number	AIRnet Ø (mm)	AIRnet Ø (in)	Outlet Ø (mm)	Outlet Ø (in)
2811 2110 80	25	1"	20	3/4"
2811 4110 80	40	1 1/2"	20	3/4"
2811 4210 80	40	1 1/2"	25	1"
2811 5110 80	50	2"	20	3/4"
2811 5210 80	50	2"	25	1"
2811 6110 80	63	2 1/2"	20	3/4"
2811 6210 80	63	2 1/2"	25	1"
2811 7110 80	80	3"	20	3/4"
2811 7210 80	80	3"	25	1"



Quickdrops & Saddle Clamps Female NPT

Part Number	AIRnet Ø (mm)	AIRnet Ø (in)	Drop Let Thread Outlet Ø (in)
2811 2012 80	25	1"	1/2"
2811 4012 80	40	1 1/2"	1/2"
2811 4112 80	40	1 1/2"	3/4"
2811 5012 80	50	2"	1/2"
2811 5112 80	50	2"	3/4"
2811 6012 80	63	2 1/2"	1/2"
2811 6112 80	63	2 1/2"	3/4"
2811 7012 80	80	3"	1/2"
2811 7112 80	80	3"	3/4"



End Caps

Part Number	AIRnet Ø (mm)	AIRnet Ø (in)
2811 1006 80	20	3/4"
2811 2006 80	25	1"
2811 4006 80	40	1 3/4"
2811 5006 80	50	2"
2811 6006 80	63	2 1/2"
2811 7006 80	80	3"
2810 9816 00 *	100	4"
2810 9816 00 *	158	6"

Parts marked with (*) require 1 additional Equal Union.



Isolation Valves

Part Number	AIRnet Ø (mm)	AIRnet Ø (in)
2811 1051 81	20	3/4"
2811 2051 81	25	1"
2811 4051 81	40	1 1/2"
2811 5051 81	50	2"
2811 6051 80 *	63	2 1/2"
2811 7051 80 *	80	3"

Parts marked with (*) are butterfly style valves.



Ball Valve Female NPT

Part Number	AIRnet Ø (mm)	AIRnet Ø (in)	Threaded Outlet Ø (in)
2811 1153 81	20	3/4"	3/4"
2811 2253 81	25	1"	1"
2811 4453 81	40	1 1/2"	1 1/2"
2811 5553 81	50	2"	2"



Butterfly Valve

Part Number	AIRnet Ø (mm)	AIRnet Ø (in)
1606 4561 04 *	100	4"
2810 9051 00 *	158	6"

Products marked with (*) require Flanges and Bolts.



Butterfly Valves Female NPT Flanges

Part Number	Description	AIRnet Ø (mm)	AIRnet Ø (in)	Threaded Outlet Ø (in)
2811 6653 80	Butterfly Valve NPT Female	63	2 1/2"	2 1/2"
2811 7753 80	Butterfly Valve NPT Female	80	3"	3"



Ball Valves

Part Number	NPT Connection	NPT Connection
1310 0723 63	1/2" Male	1/2" Female
1310 0728 84	3/4" Male	3/4" Female
1310 0722 82	1/2" F NPT	1/2" F NPT
1310 0722 83	3/4" F NPT	3/4" F NPT
1310 0722 84	1" F NPT	1" F NPT
1310 0723 78	1 1/4" F NPT	1 1/4" F NPT
1310 0722 86	1 1/2" F NPT	1 1/2" F NPT
1310 0722 87	2" F NPT	2" F NPT
1310 0722 88	2 1/2" F NPT	2 1/2" F NPT
1310 0722 89	3" F NPT	3" F NPT



Flange Gaskets

Part Number	AIRnet Ø (mm)	AIRnet Ø (in)
0650 0100 16	63	2 1/2"
0650 1001 27	80	3"
0650 0100 06	100	4"
0650 1001 25	158	6"



Flanges

Part Number	Description	AIRnet Ø (mm)	AIRnet Ø (in)
2811 6154 80	Flange ANSI standard	63	2 1/2"
2811 7154 80	Flange ANSI standard	80	3"
2810 8254 00 *	Flange ANSI standard	100	4"
2810 9154 00 *	Flange DIN/ANSI standard	158	6"

Products marked with (*) require 1 additional Equal Union.



Flange & Valve Support



Part Number	Pack Quantity	AIRnet Ø (mm)	AIRnet Ø (in)
2810 0006 38	01	63	2 1/2"
2810 0007 38	01	80	3"
2810 8064 00	01	100	4"
2810 9064 00	01	158	6"

Flange Bolts & Nuts



Part Number	Description	AIRnet Ø (mm)	AIRnet Ø (in)	Pack Quantity
2810 0254 08	Flange Bolts & Nuts UNC	100	4"	8
2810 0454 08	Flange Bolts & Nuts UNC	158	6"	8



Electrical Conductivity Strap

Part Number	AIRnet Ø (mm)	AIRnet Ø (in)
2810 0191 00	20-158	3/4"-6"



Electrical Conductivity Strip Equal Union

Part Number	Pack Quantity	AIRnet Ø (mm)	AIRnet Ø (in)
2811 1002 90	05	20-25	3/4"-1"
2811 4002 90	05	40	1 1/2"
2811 5002 90	05	50	2"



Electrical Conductivity Strip 90° Elbow

Part Number	Pack Quantity	AIRnet Ø (mm)	AIRnet Ø (in)
2811 1003 90	05	20	3/4"
2811 2003 90	05	25	1"
2811 4003 90	05	40	1 1/2"
2811 5003 90	05	50	2"



Electrical Conductivity Strip 45° Elbow

Part Number	Pack Quantity	AIRnet Ø (mm)	AIRnet Ø (in)
2811 1004 90	05	20	3/4"
2811 2004 90	05	25	1"
2811 4004 90	05	40	1 1/2"
2811 5004 90	05	50	2"



Electrical Conductivity Strip Equal Tee

Part Number	Pack Quantity	AIRnet Ø (mm)	AIRnet Ø (in)
2811 1005 90	05	20	3/4"
2811 2005 90	05	25	1"
2811 4005 90	05	40	1 1/2"
2811 5005 90	05	50	2"



Spare Nut PF Series

Part Number	Pack Quantity	AIRnet Ø (mm)	AIRnet Ø (in)
2811 1001 12	12	20	3/4"
2811 2001 12	12	25	1"
2811 4001 12	12	40	1 1/2"
2811 5001 12	12	50	2"



Spare Nut Black Series

Part Number	Pack Quantity	AIRnet Ø (mm)	AIRnet Ø (in)
2811 6060 06	06	63	2 1/2"
2811 7060 06	06	80	3"



Spare / Replacement O-Rings Black Series

Part Number	Pack Quantity	AIRnet Ø (mm)	AIRnet Ø (in)
2810 6065 10	10	63	2 1/2"
2810 7065 10	10	80	3"



Spare / Replacement O-Rings Quickdrops

Part Number	Pack Quantity	AIRnet Ø (mm)	AIRnet Ø (in)
2811 2065 10	10	25	1"
2811 4065 10	10	40-50	1 1/2"-2"
2811 6065 10	10	63-80	2 1/2"-3"



Couplings Female NPT

Part Number	Threaded Outlet Ø (in)
2811 0079 00	1 1/2"
2811 1179 00	3/4"
2811 2279 00	1"
2811 3379 00	1 1/4"
2811 4479 00	1 1/2"
2811 5579 00	2"



Pipe Nipples Male NPT Hexagon

Part Number	Thread Ø (in)
2811 0077 00	1 1/2"
2811 1177 00	3/4"
2811 2277 00	1"
2811 4477 00	1 1/2"
2811 5577 00	2"



Reducing Bushing

Part Number	NPT Connection Male	NPT Connection Female
1312 1003 25	1/2" Male	1/4" Female
1312 1003 26	1/2" Male	3/8" Female
1312 1003 35	3/4" Male	1/2" Female
1310 2032 28	1" Male	3/4" Female
1310 0724 03	1 1/2" Male	1" Female
1310 2011 69	2" Male	1 1/2" Female
1310 2563 25	2 1/2" Male	2" Female
1310 2565 14	3" Male	2" Female
1310 2560 82	3" Male	2 1/2" Female



Hoses / Assembly Straight Fittings Female NPT

Part Number	Threaded Outlet Ø (in)	L (mm)	L (ft)
1312 1009 50	3/4"	750	2 1/2
1312 1009 52	1"	750	2 1/2"
1312 1009 51	3/4"	1500	4.90
1312 1009 53	1"	1500	4.90
1312 1009 54	1 1/2"	1500	4.90
1312 1009 55	2"	1500	4.90



C Channel Wall Bracket

Part Number	Pack Quantity	W (mm)	W (in)	L (mm)	L (in)
2810 0031 05	05	50	1.97"	76	3"



Cantilever Arm

Part Number	W (mm)	W (in)	L (mm)	L (in)
2810 0032 05	40	1.57"	306	12.05"
2810 0132 00	40	1.57"	540	21.26"



Cantilever Arm Protective Cap

Part Number	Pack Quantity
2810 0034 10	10



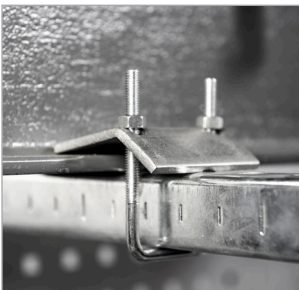
C Channel-Unistrut

Part Number	Pack Quantity	W (mm)	W (in)	L (mm)	L (in)
2810 0030 05	05	30	1 1/2"	2000	78.74"



Beam Clamp Female UNC

Part Number	Pack Quantity	Female UNC Threads
1310 0744 82	10	1/4"
1310 0744 83	10	5/16"
2810 0036 10	10	3/8"



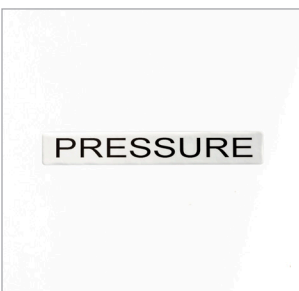
U-Bolt Beam Clamp

Part Number	Pack Quantity	Nut Reference
2810 0037 10	10	M6



Protection Strap

Part Number	AIRnet Ø (mm)	AIRnet Ø (in)
2810 0055 00	20-32	3/4"-1 3/4"
2810 0055 01	40-80	1 1/2"-3"



Pressure Label

Part Number	Pack Quantity
2810 8067 05	05



Vacuum Label

Part Number	Pack Quantity
2810 8167 05	05



Stud Adapters UNC Threads

Part Number	Female UNC Threads (in)	Male UNC Threads (in)	Usage
2811 0172 00	3/8"	1/4"	20-50 MM Clips
2811 0272 00	3/8"	5/16"	63-80 MM Clips

Threaded Rod-All Thread

Part Number	Length	UNC Thread Pitch
1310 0742 50	6 ft	1/4"
1310 0744 13	6 ft	5/16"
1310 0736 18	6 ft	3/8"



Pipe Clips Female UNC Threads

Part Number	Pack Quantity	AIRnet Ø (mm)	AIRnet Ø (in)	Nut Reference
2811 1122 20	20	20	3/4"	1/4 UNC
2811 2122 20	20	25	1"	1/4 UNC
2811 4122 20	20	40	1 1/2"	1/4 UNC
2811 5122 20	20	50	2"	1/4 UNC
2811 6122 20	20	63	2 1/2"	5/16 UNC
2811 7122 20	20	80	3"	5/16 UNC
1312 1013 61	1	100	4"	3/8 UNC
2810 9122 10	10	158	6"	3/8 UNC



Pipe Clip Spacer Polymer

Part Number	Spacer Height MM (mm)	Spacer Height MM (mm)	Pack Quantity
2811 0027 10	15	0.60"	10
2811 0127 10	20	3/4"	10
2811 0227 10	30	1 1/4"	10

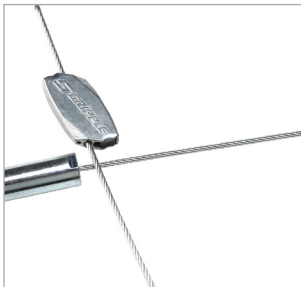


Pipe Clip Spacer Steel

Part Number	Spacer Height MM (mm)	Spacer Height MM (mm)	Pack Quantity
2810 0227 10	25	1"	10
2810 0327 10	50	2"	10

Loop Hangers

Part Number	Load Rating	Hanger Length	Pack Quantity
2810 0238 05	0-100 lbs	5 ft	5
2810 0238 10	0-100 lbs	5 ft	10
2810 0338 05	0-100 lbs	15 ft	5
2810 0338 10	0-100 lbs	15 ft	10



1/4" Stud Hangers

Part Number	Load Rating	Hanger Length	Pack Quantity
2810 0438 05	22-100 lbs	5 ft	5
2810 0438 10	22-100 lbs	5 ft	10
2810 0538 05	22-100 lbs	15 ft	5
2810 0538 10	22-100 lbs	15 ft	10



90° Eyelet Hangers

Part Number	Load Rating	Hanger Length	Pack Quantity
2810 0638 05	22-100 lbs	5 ft	5
2810 0638 10	22-100 lbs	5 ft	10
2810 0738 05	22-100 lbs	15 ft	5
2810 0738 10	22-100 lbs	15 ft	10

Barrel End Hangers

Part Number	Load Rating	Hanger Length	Pack Quantity
2810 1038 05	22-100 lbs	5 ft	5
2810 1038 10	22-100 lbs	5 ft	10
2810 1138 05	22-100 lbs	15 ft	5
2810 1138 10	22-100 lbs	15 ft	10



Electrical Pipe Cutting Tool

Part Number	Description
2810 0640 80	110V/120V
2810 0740 00	Spare Cutter Blade



Pipe Fitting Depth Gauge

Part Number	AIRnet Ø (mm)	AIRnet Ø (in)
2811 0229 80	20-158	3/4"-6"



Allen Key - Quickdrop Installation

Part Number	Reference (mm)	Reference (in)
2811 0149 00	5	0.19"
2810 0048 00	6	0.23"



Pipe Cutting Tool

Part Number	Description	AIRnet Ø (mm)	AIRnet Ø (in)
2810 0040 00	Pipe Cutting Tool	20-63	3/4"-2 3/4"
2810 0340 00	Spare Cutter Blade	20-63	3/4"-2 3/4"
2810 0440 00	Spare Cutter Blade	40-158	1 1/2"-6"
2810 0140 00	Pipe Cutting Tool	50-100	2"-4"
2810 0240 00	Pipe Cutting Tool	100-158	4"-6"



Installation Toolbox PF Series

Part Number	AIRnet Ø (mm)	AIRnet Ø (in)
2811 0045 00	20-50	3/4"-2"



Installation Toolbox 2 1/2" - 6"

Part Number	AIRnet Ø (mm)	AIRnet Ø (in)
2811 0245 00	63-158	2 1/2"-6"



Pipe Deburring Tool

Part Number	AIRnet Ø (mm)	AIRnet Ø (in)
2810 0041 00	20-25	3/4"-1"
2810 0141 00	20-50	3/4"-2"



Spanner Wrench PF Series

Part Number	AIRnet Ø (mm)	AIRnet Ø (in)
2811 1028 00	20	3/4"
2811 2028 00	25	1"
2811 4028 00	40	1 1/2"
2811 5028 00	50	2"



Hole Deburring Tool

Part Number	Description
2810 0042 00	Pen-Light Duty
2810 0641 00	Pen-Heavy Duty



Spanner Wrench Black Series

Part Number	AIRnet Ø (mm)	AIRnet Ø (in)
2811 6028 00	63	2 1/2"
2811 6628 00	63	2 1/2"
2811 7028 00	80	3"
2811 7728 00	80	3"



Torque Heads for Black Series

Part Number	Description	AIRnet Ø (mm)	AIRnet Ø (in)
2811 6128 80	Torque Head Tool	63	2 1/2"
2811 7128 80	Torque Head Tool	80	3"



Torque Wrench

Part Number	AIRnet Ø (mm)	AIRnet Ø (in)
2811 0028 80	100-158	4"-6"



Quickdrop Installation Hole Saw

Part Number	Description	AIRnet Ø (mm)	AIRnet Ø (in)	Reference (mm)	Reference (in)
2810 0143 00	AIRnet Quick Drops	25	1"	14	0.55"
2810 0243 00	AIRnet Quick Drops	40-80	1 1/2"-3"	24	0.95"



Hole Saw Arbor Bit

Part Number	AIRnet Ø (mm)	AIRnet Ø (in)	Reference (mm)	Reference (in)
2810 0044 00	25-80	1"-3"	14-24	0.55"-0.95"



Installation Tools / Lubricant Gymna Gel Water-based

Part Number	Pack Quantity	Description
1312 1009 45	4	(4) Four Liter Bottles
2810 0148 00	1	(1) 1/2 Liter Bottles



Quick Disconnects

Part Number	Description	AIRnet (in)
1312 1009 41	AIRnet Quick Drops ARO Profile 1/4" Body Size	1/4" FNPT
1312 1009 41	ARO Profile 1/4" Body Size	1/2" MNPT
1312 1009 46	Industrial Interchange 1/4" Body Size	1/4" FNPT
1312 1009 47	Industrial Interchange 1/4" Body Size	1/2" MNPT
1312 1009 43	ARO Profile Plug	1/4" FNPT
1312 1009 44	ARO Profile Plug	1/4" MNPT
1312 1009 48	Industrial Interchange Plug	1/4" FNPT
1312 1009 49	Industrial Interchange Plug	1/4" MNPT



Hose Reels

Part Number	Description	Length (ft)	AIRnet (in)
1310 0722 93	300 PSI Open Reel	50	1/4"
1310 0722 94	300 PSI Open Reel	50	3/8"
1310 0722 95	300 PSI Open Reel	30	3/8"
1310 0723 73	300 PSI Enclosed Reel	50	1/4"



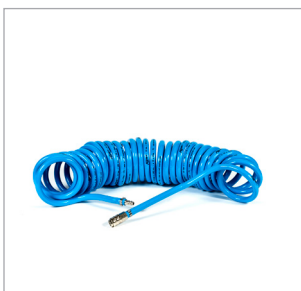
Shop Hose

Part Number	Description	Length (ft)	AIRnet (in)
1310 0722 96	300 PSI	25	3/8"
1310 0722 97	300 PSI	50	3/8"



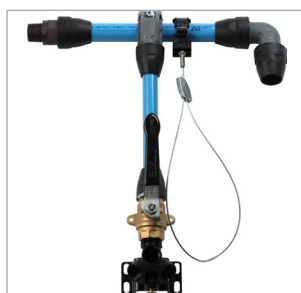
Filters / Regulators / Lubricators

Part Number	Description	AIRnet (in)
1310 0722 99	Filter / Regulator	1/2"
1310 0722 98	Filter / Regulator / Lubricator	1/2"
1310 0723 64	Replacement Cartridges 5 Microns	1/2" or 3/8"
1310 0723 66	Convert from 1/2" to 3/8" Port Size	3/8" - 1/2"
1310 0723 67	Mounting Blocks - Attach to Each Other	3/8" - 1/2"
1310 0723 68	Mounting Blocks to Each Other and Wall	3/8" - 1/2"
1310 0723 79	Mounting Blocks to Mount Regulator	3/8" - 1/2"
1310 0724 97	Replacement Pressure Gauge	3/8" - 1/2"
2811 1081 00	Pressure Regulator only Small	3/4" FNPT
2811 2081 00	Pressure Regulator only Large	1" FNPT
2811 1085 00	Filter / Regulator Combo Small	3/4" FNPT
2811 2085 00	Filter / Regulator Combo Large	1" FNPT
2811 1087 00	Filter / Regulator / Lubricator Small	3/4" FNPT
2811 2087 00	Filter / Regulator / Lubricator Large	1" FNPT
2811 1083 00	Auto Drain Small Inlet	3/4" FNPT
2811 2083 00	Auto Drain Large Inlet	1" FNPT
2811 0089 00	Filter Element Spare	5 Micron Spare



Spiral Hose

Part Number	Length (ft)	AIRnet (in)
1310 0722 90	12	5/16"



Demo Kit

Part Number	Description
2014 9005 23	Sales Demo Kit

65 PSI

Flow cfm	Length									
	150 ft	300 ft	500 ft	1000 ft	1700 ft	2500 ft	3500 ft	4500 ft	5500 ft	6500 ft
5	3/4"	3/4"	3/4"	3/4"	3/4"	3/4"	1"	1"	1"	1"
15	3/4"	3/4"	3/4"	1"	1 1/2"	1 1/2"	1 1/2"	1 1/2"	1 1/2"	1 1/2"
30	1"	1"	1 1/2"	1 1/2"	1 1/2"	1 1/2"	1 1/2"	1 1/2"	2"	2"
40	1"	1 1/2"	1 1/2"	1 1/2"	1 1/2"	1 1/2"	2"	2"	2"	2"
60	1 1/2"	1 1/2"	1 1/2"	1 1/2"	2"	2"	2"	2 1/2"	2 1/2"	2 1/2"
90	1 1/2"	1 1/2"	1 1/2"	2"	2"	2 1/2"	2 1/2"	2 1/2"	2 1/2"	2 1/2"
150	1 1/2"	2"	2"	2 1/2"	2 1/2"	2 1/2"	3"	3"	3"	3"
200	1 1/2"	2"	2"	2 1/2"	3"	3"	3"	3"	4"	4"
300	2"	2 1/2"	2 1/2"	3"	3"	3"	4"	4"	4"	4"
450	2 1/2"	2 1/2"	3"	3"	4"	4"	4"	6"	6"	6"
600	2 1/2"	3"	3"	4"	4"	6"	6"	6"	6"	6"
750	2 1/2"	3"	4"	4"	6"	6"	6"	6"	6"	6"
900	3"	3"	4"	4"	6"	6"	6"	6"	6"	6"
1000	3"	4"	4"	6"	6"	6"	6"	6"	6"	6"
1200	3"	4"	4"	6"	6"	6"	6"	6"	6"	8"
1500	4"	4"	6"	6"	6"	6"	6"	6"	8"	8"
1800	4"	6"	6"	6"	6"	6"	8"	8"	8"	8"
2100	4"	6"	6"	6"	6"	8"	8"	8"	8"	8"
2400	4"	6"	6"	6"	8"	8"	8"	8"	8"	10"
2700	6"	6"	6"	6"	8"	8"	8"	8"	8"	10"
3000	6"	6"	6"	6"	8"	8"	8"	8"	10"	10"
3300	6"	6"	6"	8"	8"	8"	8"	10"	10"	10"
3600	6"	6"	6"	8"	8"	8"	10"	10"	10"	10"

*Compressed Air Only

Advised pipe diameters assume a straight line system with a compressor outlet temperature of 86°F and a maximum pressured drop of 5%. For closed loop systems, flow rates can be doubled. (Example: 6500 ft of 1" pipes in a closed loop system can achieve a 10 cfm flow at 65 psi.)

102 PSI

Flow cfm	Length									
	150ft	300ft	500ft	1000ft	1700 ft	2500 ft	3500 ft	4500 ft	5500 ft	6500 ft
5	3/4"	3/4"	3/4"	3/4"	3/4"	3/4"	3/4"	3/4"	3/4"	3/4"
15	3/4"	3/4"	3/4"	3/4"	1"	1"	1"	1 1/2"	1 1/2"	1 1/2"
30	3/4"	3/4"	1"	1"	1 1/2"	1 1/2"	1 1/2"	1 1/2"	1 1/2"	1 1/2"
40	3/4"	1"	1"	1 1/2"	1 1/2"	1 1/2"	1 1/2"	1 1/2"	1 1/2"	1 1/2"
60	1"	1"	1 1/2"	1 1/2"	1 1/2"	1 1/2"	2"	2"	2"	2"
90	1"	1 1/2"	1 1/2"	1 1/2"	2"	2"	2"	2"	2 1/2"	2 1/2"
150	1 1/2"	1 1/2"	1 1/2"	2"	2"	2 1/2"	2 1/2"	2 1/2"	2 1/2"	2 1/2"
200	1 1/2"	1 1/2"	2"	2"	2 1/2"	2 1/2"	2 1/2"	3"	3"	3"
300	1 1/2"	2"	2"	2 1/2"	2 1/2"	3"	3"	3"	3"	4"
450	2"	2 1/2"	2 1/2"	3"	3"	3"	4"	4"	4"	4"
600	2"	2 1/2"	2 1/2"	3"	3"	4"	4"	4"	6"	6"
750	2 1/2"	2 1/2"	3"	3"	4"	4"	6"	6"	6"	6"
900	2 1/2"	3"	3"	4"	4"	6"	6"	6"	6"	6"
1000	2 1/2"	3"	3"	4"	4"	6"	6"	6"	6"	6"
1200	2 1/2"	3"	3"	4"	6"	6"	6"	6"	6"	6"
1500	3"	3"	4"	6"	6"	6"	6"	6"	6"	6"
1800	3"	4"	4"	6"	6"	6"	6"	6"	6"	6"
2100	3"	4"	4"	6"	6"	6"	6"	6"	8"	8"
2400	4"	4"	6"	6"	6"	6"	6"	8"	8"	8"
2700	4"	4"	6"	6"	6"	6"	8"	8"	8"	8"
3000	4"	6"	6"	6"	6"	6"	8"	8"	8"	8"
3300	4"	6"	6"	6"	6"	8"	8"	8"	8"	8"
3600	4"	6"	6"	6"	6"	8"	8"	8"	8"	8"

*Compressed Air Only

Advised pipe diameters assume a straight line system with a compressor outlet temperature of 86°F and a maximum pressured drop of 5%. For closed loop systems, flow rates can be doubled. (Example: 6500 ft of 3/4" pipes in a closed loop system can achieve a 10 cfm flow at 102 psi.)

145 PSI

Flow cfm	Length									
	150 ft	300 ft	500 ft	1000 ft	1700 ft	2500 ft	3500 ft	4500 ft	5500 ft	6500 ft
5	3/4"	3/4"	3/4"	3/4"	3/4"	3/4"	3/4"	3/4"	3/4"	3/4"
15	3/4"	3/4"	3/4"	3/4"	3/4"	1"	1"	1"	1"	1"
30	3/4"	3/4"	3/4"	1"	1"	1 1/2"	1 1/2"	1 1/2"	1 1/2"	1 1/2"
40	3/4"	3/4"	1"	1"	1 1/2"	1 1/2"	1 1/2"	1 1/2"	1 1/2"	1 1/2"
60	3/4"	1"	1"	1 1/2"	1 1/2"	1 1/2"	1 1/2"	1 1/2"	1 1/2"	1 1/2"
90	1"	1"	1 1/2"	1 1/2"	1 1/2"	1 1/2"	2"	2"	2"	2"
150	1 1/2"	1 1/2"	1 1/2"	1 1/2"	2"	2"	2"	2 1/2"	2 1/2"	2 1/2"
200	1 1/2"	1 1/2"	1 1/2"	2"	2"	2"	2 1/2"	2 1/2"	2 1/2"	2 1/2"
300	1 1/2"	1 1/2"	2"	2"	2 1/2"	2 1/2"	2 1/2"	3"	3"	3"
450	1 1/2"	2"	2"	2 1/2"	2 1/2"	3"	3"	3"	3"	4"
600	2"	2"	2 1/2"	2 1/2"	3"	3"	3"	4"	4"	4"
750	2"	2 1/2"	2 1/2"	3"	3"	4"	4"	4"	4"	4"
900	2"	2 1/2"	2 1/2"	3"	3"	4"	4"	4"	6"	6"
1000	2 1/2"	2 1/2"	3"	3"	4"	4"	4"	6"	6"	6"
1200	2 1/2"	2 1/2"	3"	3"	4"	4"	6"	6"	6"	6"
1500	2 1/2"	3"	3"	4"	4"	6"	6"	6"	6"	6"
1800	2 1/2"	3"	4"	4"	6"	6"	6"	6"	6"	6"
2100	3"	3"	4"	4"	6"	6"	6"	6"	6"	6"
2400	3"	4"	4"	6"	6"	6"	6"	6"	6"	6"
2700	3"	4"	4"	6"	6"	6"	6"	6"	6"	6"
3000	3"	4"	4"	6"	6"	6"	6"	6"	8"	8"
3300	3"	4"	6"	6"	6"	6"	6"	6"	8"	8"
3600	4"	4"	6"	6"	6"	6"	6"	8"	8"	8"

*Compressed Air Only

Advised pipe diameters assume a straight line system with a compressor outlet temperature of 86°F and a maximum pressured drop of 5%. For closed loop systems, flow rates can be doubled. (Example: 6500 ft of 3/4" pipes in a closed loop system can achieve a 10 cfm flow at 145 psi.)

189 PSI

Flow cfm	Length									
	150 ft	300 ft	500 ft	1000 ft	1700 ft	2500 ft	3500 ft	4500 ft	5500 ft	6500 ft
5	3/4"	3/4"	3/4"	3/4"	3/4"	3/4"	3/4"	3/4"	3/4"	3/4"
15	3/4"	3/4"	3/4"	3/4"	3/4"	3/4"	3/4"	1"	1"	1"
30	3/4"	3/4"	3/4"	3/4"	1"	1"	1"	1 1/2"	1 1/2"	1 1/2"
40	3/4"	3/4"	3/4"	1"	1"	1 1/2"	1 1/2"	1 1/2"	1 1/2"	1 1/2"
60	3/4"	3/4"	1"	1"	1 1/2"	1 1/2"	1 1/2"	1 1/2"	1 1/2"	1 1/2"
90	3/4"	1"	1"	1 1/2"	1 1/2"	1 1/2"	1 1/2"	1 1/2"	1 1/2"	2"
150	1"	1 1/2"	1 1/2"	1 1/2"	1 1/2"	2"	2"	2"	2"	2"
200	1 1/2"	1 1/2"	1 1/2"	1 1/2"	2"	2"	2"	2 1/2"	2 1/2"	2 1/2"
300	1 1/2"	1 1/2"	1 1/2"	2"	2"	2 1/2"	2 1/2"	2 1/2"	2 1/2"	2 1/2"
450	1 1/2"	1 1/2"	2"	2 1/2"	2 1/2"	2 1/2"	3"	3"	3"	3"
600	1 1/2"	2"	2"	2 1/2"	2 1/2"	3"	3"	3"	3"	4"
750	2"	2"	2 1/2"	2 1/2"	3"	3"	3"	4"	4"	4"
900	2"	2 1/2"	2 1/2"	3"	3"	3"	4"	4"	4"	4"
1000	2"	2 1/2"	2 1/2"	3"	3"	4"	4"	4"	4"	4"
1200	2"	2 1/2"	2 1/2"	3"	3"	4"	4"	4"	6"	6"
1500	2 1/2"	2 1/2"	3"	3"	4"	4"	6"	6"	6"	6"
1800	2 1/2"	3"	3"	4"	4"	6"	6"	6"	6"	6"
2100	2 1/2"	3"	3"	4"	4"	6"	6"	6"	6"	6"
2400	2 1/2"	3"	4"	4"	6"	6"	6"	6"	6"	6"
2700	3"	3"	4"	4"	6"	6"	6"	6"	6"	6"
3000	3"	3"	4"	6"	6"	6"	6"	6"	6"	6"
3300	3"	4"	4"	6"	6"	6"	6"	6"	6"	6"
3600	3"	4"	4"	6"	6"	6"	6"	6"	6"	6"

*Compressed Air Only

Advised pipe diameters assume a straight line system with a compressor outlet temperature of 86°F and a maximum pressured drop of 5%. For closed loop systems, flow rates can be doubled. (Example: 6500 ft of 3/4" pipes in a closed loop system can achieve a 10 cfm flow at 189 psi.)

232 PSI

Flow cfm	Length									
	150 ft	300 ft	500 ft	1000 ft	1700 ft	2500 ft	3500 ft	4500 ft	5500 ft	6500 ft
5	3/4"	3/4"	3/4"	3/4"	3/4"	3/4"	3/4"	3/4"	3/4"	3/4"
15	3/4"	3/4"	3/4"	3/4"	3/4"	3/4"	3/4"	3/4"	3/4"	1"
30	3/4"	3/4"	3/4"	3/4"	3/4"	1"	1"	1"	1"	1 1/2"
40	3/4"	3/4"	3/4"	3/4"	1"	1"	1"	1 1/2"	1 1/2"	1 1/2"
60	3/4"	3/4"	3/4"	1"	1"	1 1/2"	1 1/2"	1 1/2"	1 1/2"	1 1/2"
90	3/4"	1"	1"	1 1/2"	1 1/2"	1 1/2"	1 1/2"	1 1/2"	1 1/2"	1 1/2"
150	1"	1"	1 1/2"	1 1/2"	1 1/2"	1 1/2"	1 1/2"	2"	2"	2"
200	1"	1 1/2"	1 1/2"	1 1/2"	1 1/2"	2"	2"	2"	2"	2 1/2"
300	1 1/2"	1 1/2"	1 1/2"	1 1/2"	2"	2"	2 1/2"	2 1/2"	2 1/2"	2 1/2"
450	1 1/2"	1 1/2"	2"	2"	2 1/2"	2 1/2"	2 1/2"	2 1/2"	3"	3"
600	1 1/2"	2"	2"	2 1/2"	2 1/2"	2 1/2"	3"	3"	3"	3"
750	1 1/2"	2"	2"	2 1/2"	2 1/2"	3"	3"	3"	3"	4"
900	2"	2"	2 1/2"	2 1/2"	3"	3"	3"	4"	4"	4"
1000	2"	2"	2 1/2"	2 1/2"	3"	3"	3"	4"	4"	4"
1200	2"	2 1/2"	2 1/2"	3"	3"	3"	4"	4"	4"	4"
1500	2"	2 1/2"	2 1/2"	3"	3"	4"	4"	4"	6"	6"
1800	2 1/2"	2 1/2"	3"	3"	4"	4"	4"	6"	6"	6"
2100	2 1/2"	3"	3"	4"	4"	4"	6"	6"	6"	6"
2400	2 1/2"	3"	3"	4"	4"	6"	6"	6"	6"	6"
2700	2 1/2"	3"	3"	4"	4"	6"	6"	6"	6"	6"
3000	2 1/2"	3"	4"	4"	6"	6"	6"	6"	6"	6"
3300	3"	3"	4"	4"	6"	6"	6"	6"	6"	6"
3600	3"	3"	4"	4"	6"	6"	6"	6"	6"	6"

*Compressed Air Only

Advised pipe diameters assume a straight line system with a compressor outlet temperature of 86°F and a maximum pressured drop of 5%. For closed loop systems, flow rates can be doubled. (Example: 6500 ft of 3/4" pipes in a closed loop system can achieve a 10 cfm flow at 232 psi.)



Aluminum Installation + Assembly Guide 2018



Operating Conditions, Safety Instructions & Installations in
explosive environments.....40

Expansion Loops41

Installation

Diameters 20 - 50 mm / 3/4" - 2" (PF Series).....42-43

Diameters 63 - 80 mm / 2 1/2" - 3" (Black Series).....44-45

Diameters 100 mm & 158 mm / 4" & 6".....46-47

Quickdrop Assembly.....48

Replace Classic Series with PF Series.....49

Replace Classic Series with new Black Series.....50

Replace old D100 fittings with new D100 fittings.....50

Pipe Clips Installation.....51

Butterfly Valve Installation.....52

Valve Support.....53

Mounting Conductivity Strap.....54

Mounting Conductivity Strips.....55

Adapter Union Diameters 20 - 50 mm / 3/4" - 2" (PF Series).....56

Adapter Union Diameters 63 - 80 mm / 2 1/2" - 3" (Black Series).....57

Operating Conditions & Safety Instructions



OPERATING CONDITIONS

AIRnet pipes and fittings are designed to convey compressed air and vacuum. The system can also be used for nitrogen, helium, argon, neon, xenon and krypton. AIRnet pipes and fittings must only be used within the pressure and temperature specifications referred to in the AIRnet Component List.

AIRnet fittings are sensitive to direct UV radiation. In case of direct exposure, shield the fittings. (AIRnet pipes offer excellent resistance to UV radiation.)

AIRnet pipes and fittings should be protected against rain, snow, and guano.

AIRnet pipes and fittings must be appropriately protected against violent impacts.

AIRnet pipes and fittings are not suitable for direct contact with soil.

AIRnet pipes and fittings should not be used as support for electrical equipment or earth conductors.

AIRnet pipes should never be connected directly to a source of vibrations (use hoses instead).

Ensure accessibility of the AIRnet system for possible future expansion or maintenance.

Pressure relief valves must be installed where needed to ensure that the system working pressure cannot exceed the maximum working pressure of the AIRnet system.

AIRNET INSTALLATIONS IN EXPLOSIVE ENVIRONMENTS

AIRnet fittings are non-conductive and must be bonded with conductivity strips and conductivity straps (except the D158 / 6" equal socket and the new D100 / 4" equal socket).

AIRnet installations in explosive environments must always be earthed.

AIRnet bonding and the earthing must be checked at frequent intervals to secure that the system cannot be electrically charged. Cutting, deburring and assembly of AIRnet pipes may create sparks. Necessary precautions in explosive atmospheres must be taken.

SAFETY INSTRUCTIONS

Installation, adjustments and repair work of an AIRnet system must be performed by authorized trained personnel.

Installers must use the necessary protection means (PPMs). When working at heights, use a harness for personal protection, and ensure that tools are securely fastened to prevent them from falling.

Installers must comply to all local safety requirements related to the application(s) in scope. Special care must always be taken to

prevent suffocation risks when working with other gases than air. Before any installation, adjustment, repair work or other non-routine checks, relieve the AIRnet system

of pressure and effectively isolate the system from all sources of pressure.

Only genuine AIRnet parts should be used when installing, adjusting or repairing an AIRnet system.

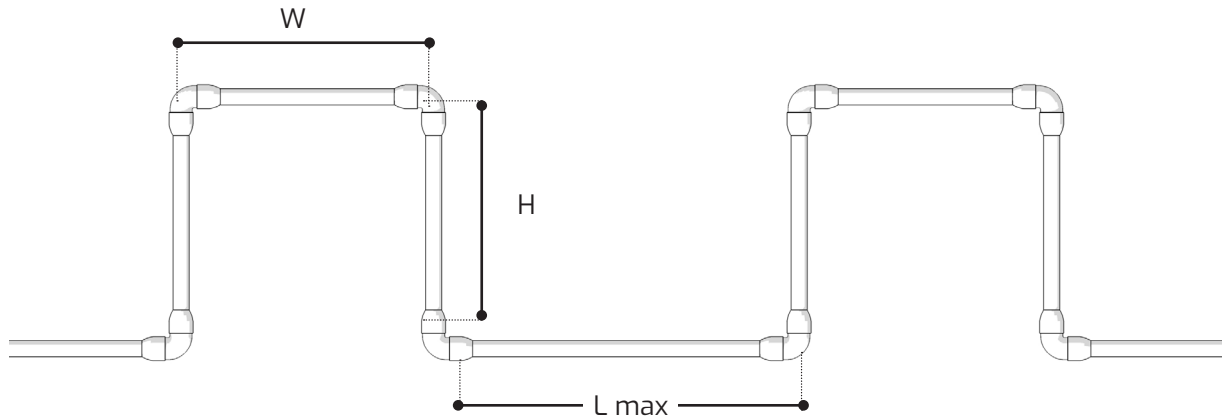
All plugs and caps must be removed before installing the AIRnet pipes.

Check the surface of the AIRnet pipes before installing. There should be no relevant scratches, abrasions, dents etc.

Use only solvents or chemicals which do not damage the materials of AIRnet.

Before using the AIRnet system, installers must ensure that all necessary test controls and applicable rules for the specific installation are complied with.

At initial start up of the AIRnet system, apply a test pressure of 21.8 PSI to identify leakage or imperfect joints. After performing an inspection, increase the pressure gradually and constantly (max. 14.5 PSI every 30 seconds) and perform a second inspection for leakages or imperfect joints at the final pressure.



Long straight pipes will expand or contract due to temperature variations. To compensate for this effect, expansion loops are required. The number of expansion loops depends on the total length of the straight line and the maximum temperature variation. An expansion loop is a U-shaped construction that compensates the variation in length.

The below table clarifies the maximum possible straight distance vs. the temperature variation. When the length of the straight line exceeds the maximum, expansion loops are required to compensate for the variation in length.

	Ø20 mm / ¾"	Ø25 mm / 1"	Ø40 mm / 1½"	Ø50 mm / 2"	Ø63 mm / 2½"	Ø80 mm / 3"	Ø100 mm / 4"	Ø158 mm / 6"
H	1.5 m / 4.9 ft			2 m / 6.6 ft				
W	0.75 m / 2.5 ft			1 m / 3.3 ft				
Dt	Maximum distance between two expansion joints							
5°C / 9°F	211 m / 692 ft	168 m / 551 ft	187 m / 614 ft	150 m / 492 ft	119 m / 390 ft	94 m / 308 ft	75 m / 247 ft	47 m / 154 ft
10°C / 18°F	159 m / 522 ft	127 m / 417 ft	141 m / 463 ft	113 m / 371 ft	90 m / 295 ft	71 m / 233 ft	57 m / 186 ft	36 m / 118 ft
20°C / 36°F	107 m / 351 ft	85 m / 279 ft	95 m / 312 ft	76 m / 249 ft	60 m / 197 ft	47 m / 154 ft	38 m / 123 ft	24 m / 79 ft
30°C / 54°F	80 m / 262 ft	64 m / 210 ft	71 m / 233 ft	57 m / 187 ft	45 m / 148 ft	36 m / 118 ft	29 m / 94 ft	18 m / 59 ft
40°C / 72°F	64 m / 210 ft	52 m / 171 ft	57 m / 187 ft	45 m / 148 ft	36 m / 118 ft	29 m / 95 ft	23 m / 76 ft 14 m	14 m / 46 ft

When using flexibles instead of fixed pipes as expansion loops, any length of flexible can be used.

Diameters 20 - 50 mm / 3/4" - 2" (PF) SERIES

1 MEASURE

Length $L = l + (2 \times S)$

\varnothing	S
20 mm / 3/4"	39 mm / 1 1/2"
25 mm / 1"	44 mm / 1 3/4"
40 mm / 1 1/2"	63 mm / 2 1/2"
50 mm / 2"	78 mm / 3 1/16"

2 CUT

OR

\varnothing 20-63mm 2810 0040 00

110/120V 2810 0640 80

220/230V 2810 0540 80

3 CHECK

$\leq 10^\circ$

CHECK

4 DEBURR

OR

\varnothing 20-50 mm 2810 0141 00

Heavy Duty 2810 0641 00

Light Duty 2810 0042 00

5 MARK

ALL 2811 0229 80

Diameters 20 - 50 mm / 3/4" - 2" (PF) SERIES

(OPTIONAL: LOOSEN)

360°
CCW

Ø20	2811 1028 00
Ø25	2811 2028 00
Ø40	2811 4028 00
Ø50	2811 5028 00

6 LUBRICATE

7 INSERT

ALL 2810 0148 00

8 CHECK

CHECK

(OPTIONAL: TIGHTEN)

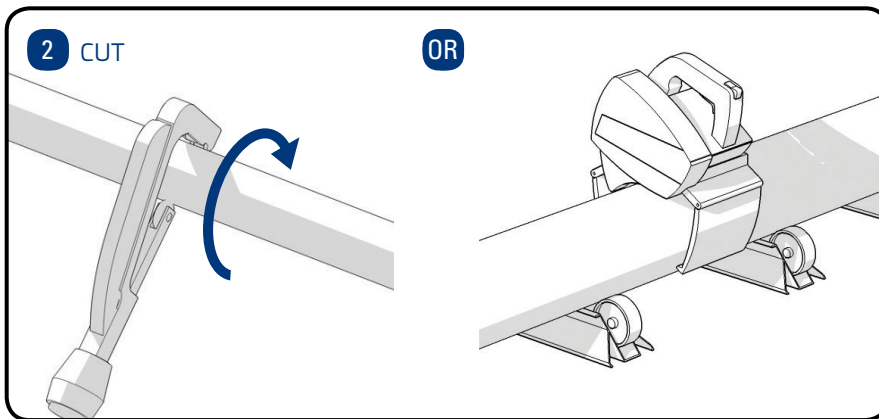
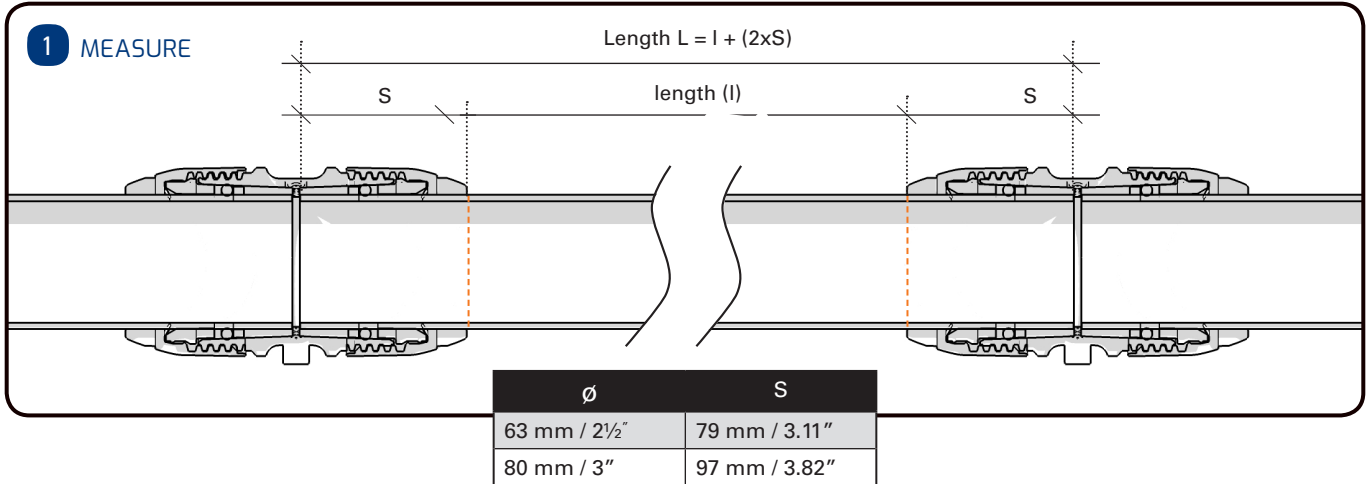
360°
CW

Ø20	2811 1028 00
Ø25	2811 2028 00
Ø40	2811 4028 00
Ø50	2811 5028 00

9 CHECK MARKERS

CHECK

Diameters 63 - 80 mm / 2 1/2" - 3" (Black Series)

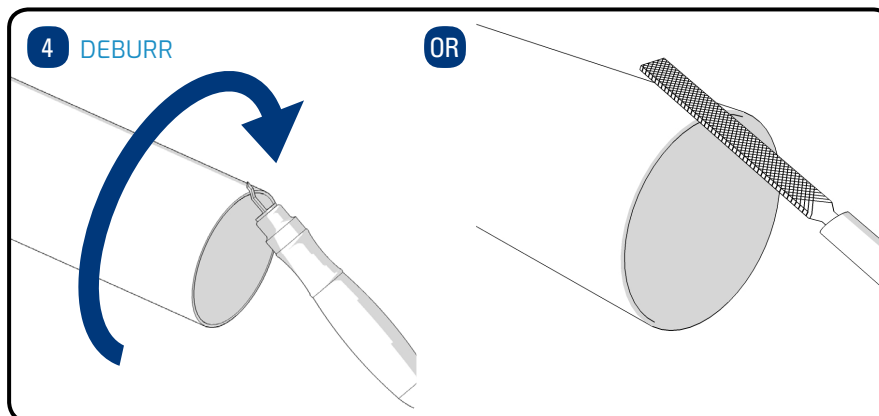
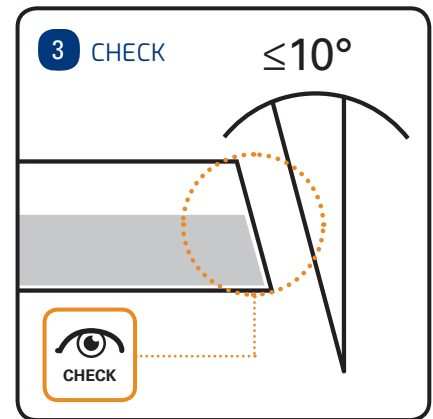


Ø 20-63 mm 2810 0040 00

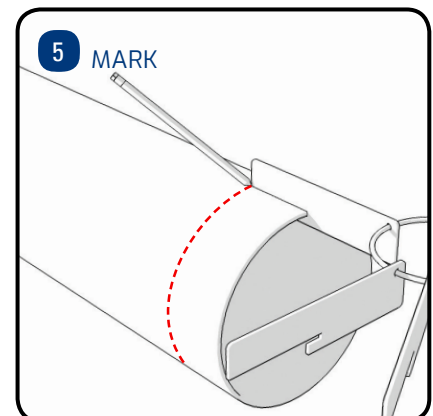
110/120V 2810 0640 80

Ø 40-100 mm 2810 0140 00

220/230V 2810 0540 80

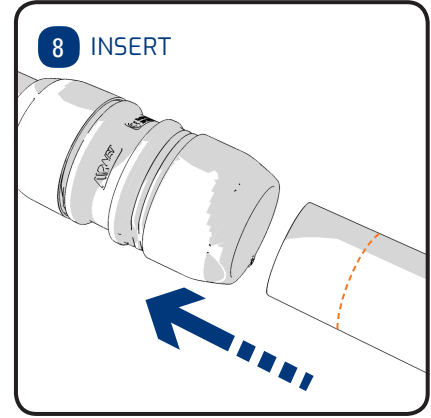
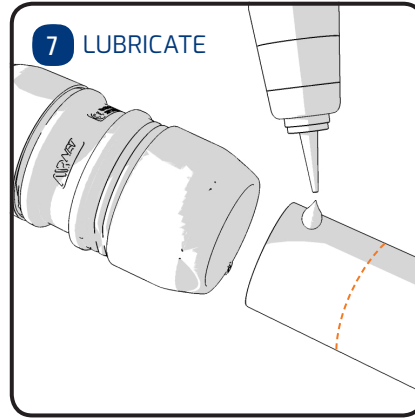
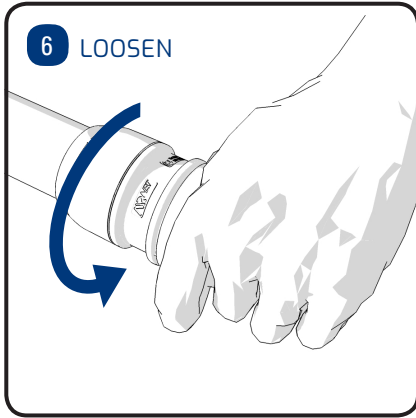


ALL 2810 0641 00

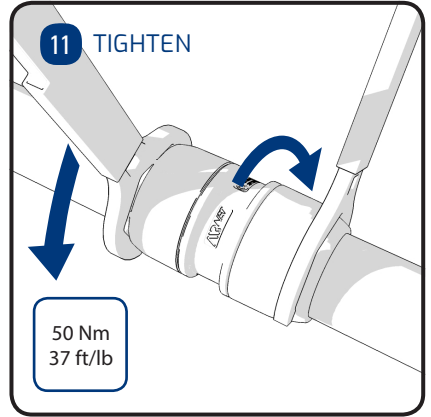
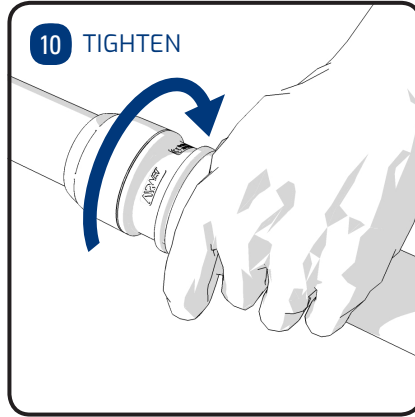
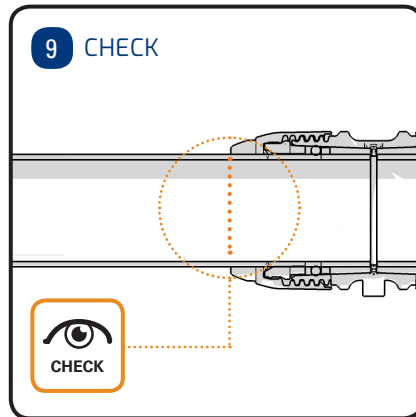


ALL 2811 0229 80

Diameters 63 - 80 mm / 2 1/2" - 3" (Black Series)



ALL 2810 0148 00

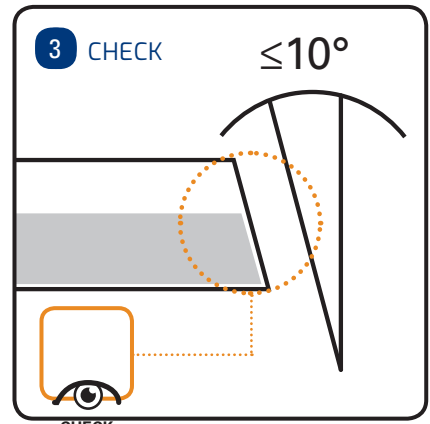
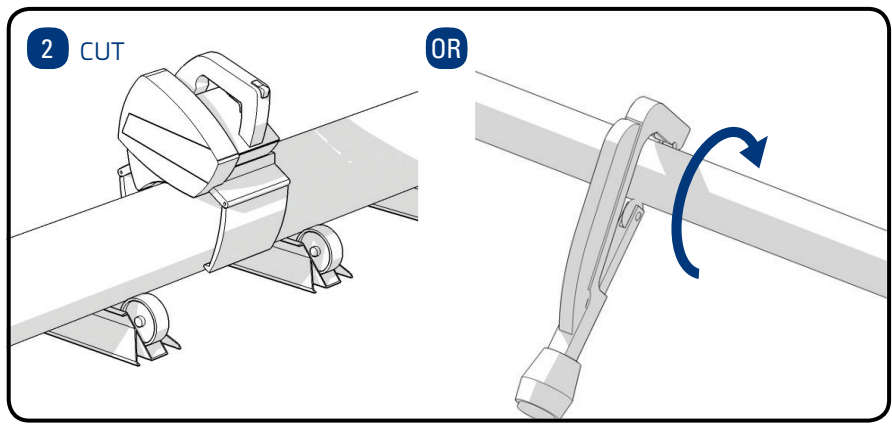
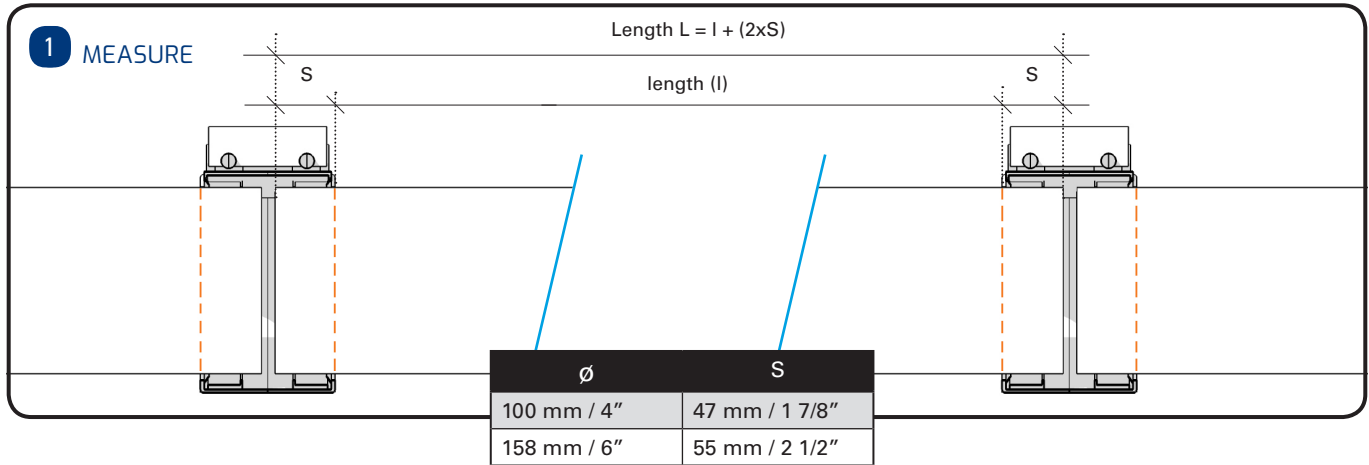


Torque wrench 2811 0028 80

63mm torque head 2811 6128 80

80mm torque head 2811 7128 80

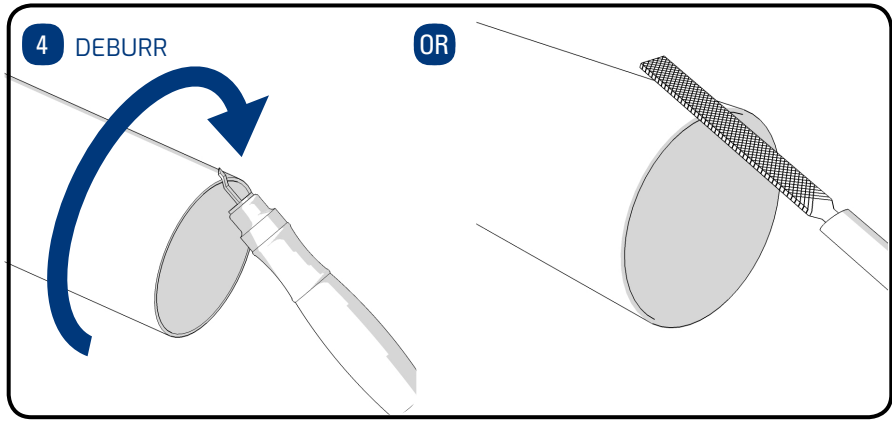
Diameter 100 - 158 mm / 4" - 6"



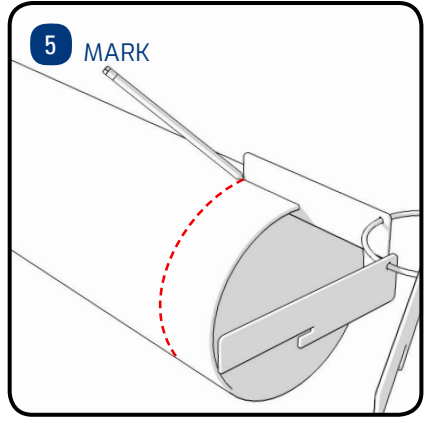
110/120V 2810 0640 80

220/230V 2810 0540 80

\varnothing 100-158 mm 2810 0240 00

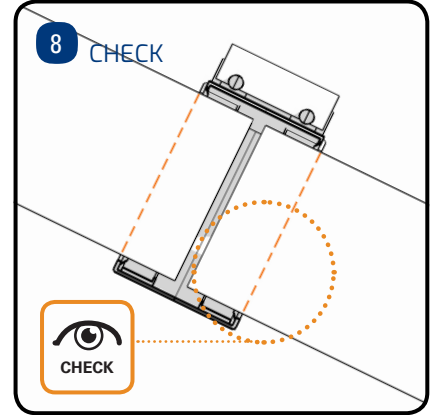
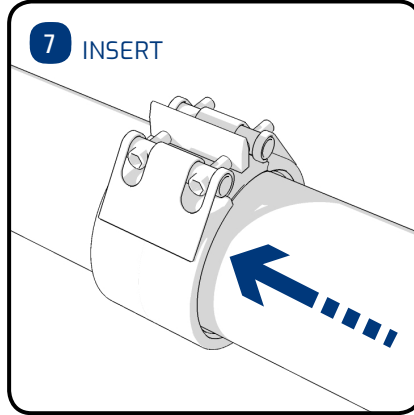
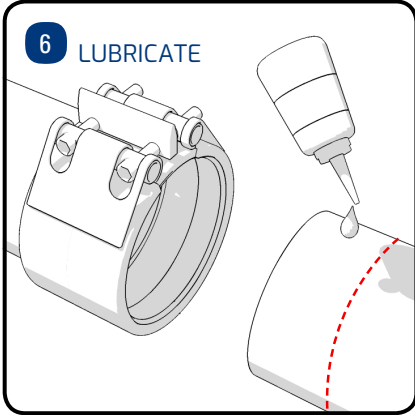


ALL 2810 0641 00

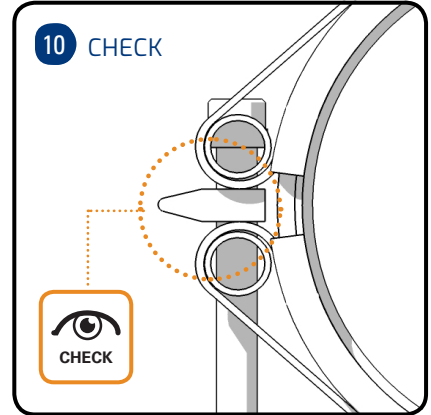
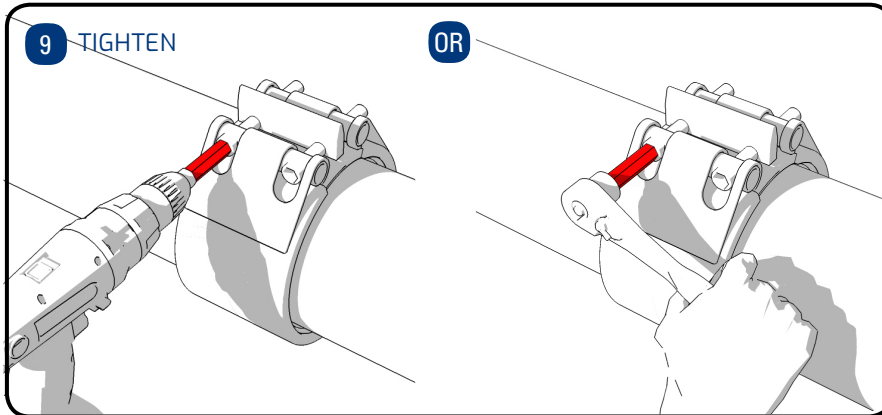


ALL 2811 0229 80

Diameter 100 - 158 mm / 4" - 6"



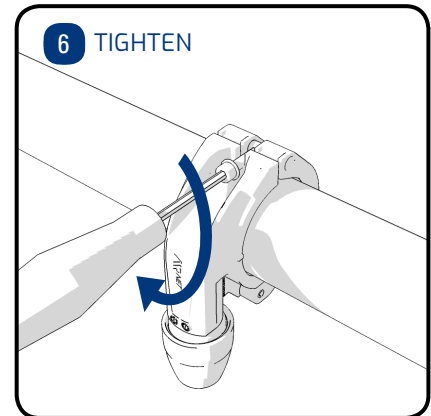
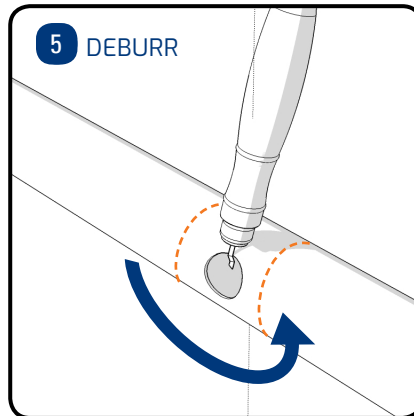
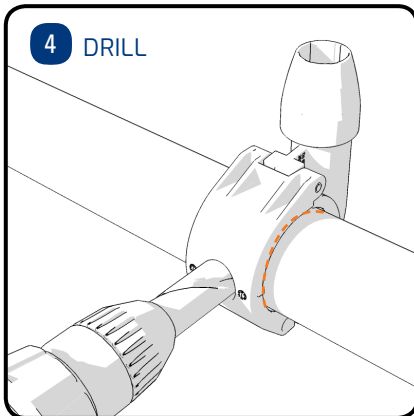
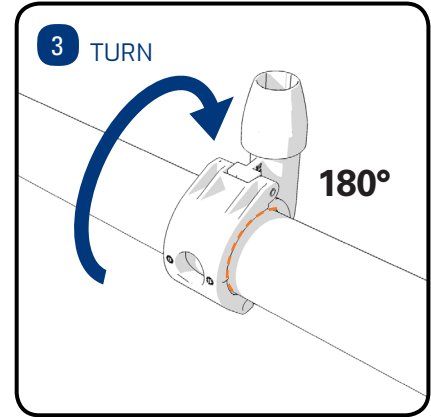
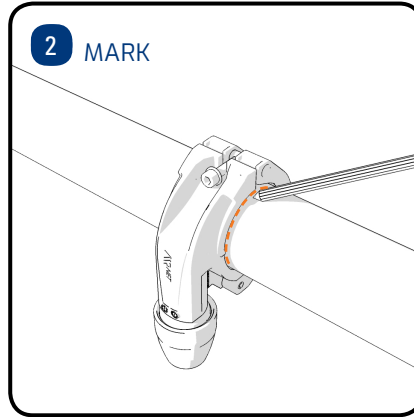
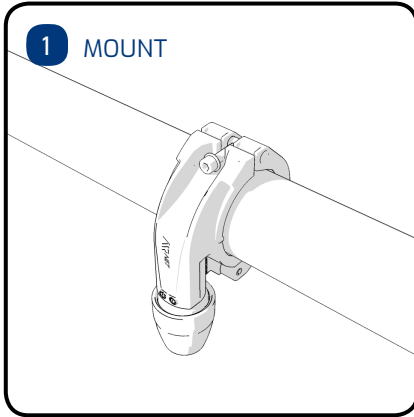
ALL 2810 0148 00



Hexagon Socket - D100 4027 1323 08

Hexagon Socket - D158 0462 3601 23

Quickdrop Assembly



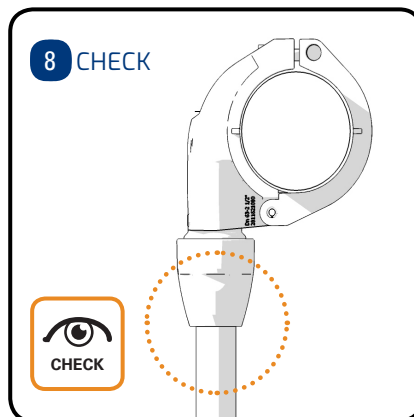
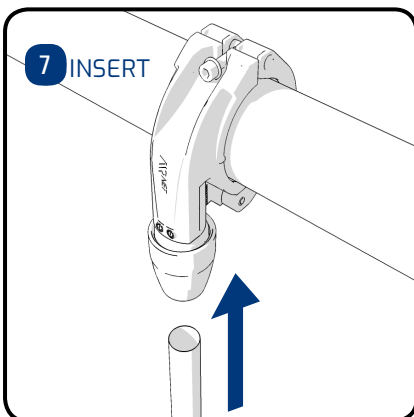
Ø 25 mm drill bit 2810 0143 00

Ø 40-80 mm drill bit 2810 0243 00

Heavy Duty 2810 0641 00

Light Duty 2810 0042 00

ALL 2811 0149 00

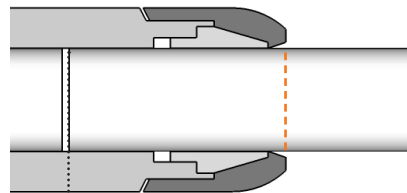


Replace Classic Series with new PF Series

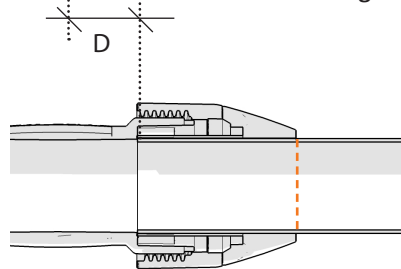
Diameters 20 - 50 mm / ¾" - 2"



D						
∅ 20 mm	21.5 mm	9 mm	9 mm	8 mm	8 mm	13 mm
∅ 25 mm	19 mm	14.5 mm	13 mm	6 mm	8 mm	20 mm
∅ 40 mm	38 mm	23 mm	28 mm	23 mm	9 mm	35 mm
∅ 50 mm	37.5 mm	32 mm	35 mm	32 mm	0 mm	34 mm
∅ ¾"	7/8"	3/8"	3/8"	1/4"	1/4"	1/2"
∅ 1"	3/4"	1/2"	1/2"	1/4"	1/4"	3/4"
∅ 1½"	1½"	7/8"	1½"	7/8"	3/8"	1¾"
∅ 2"	1½"	1¼"	1¾"	1¼"	0"	1¾"

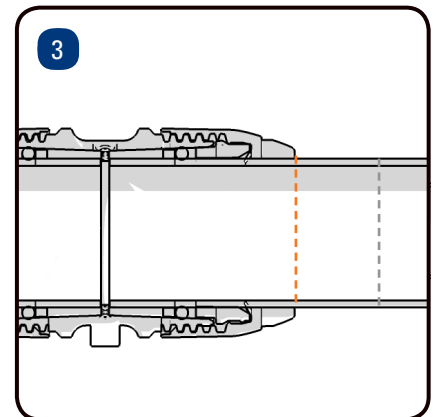
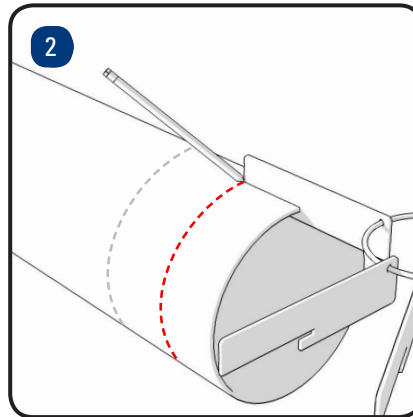
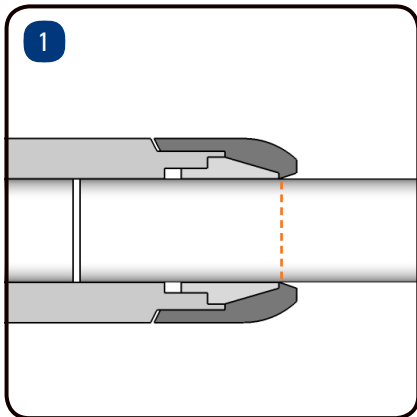


D = Length to be cut off before replacement



Replace Classic Series with new Black Series

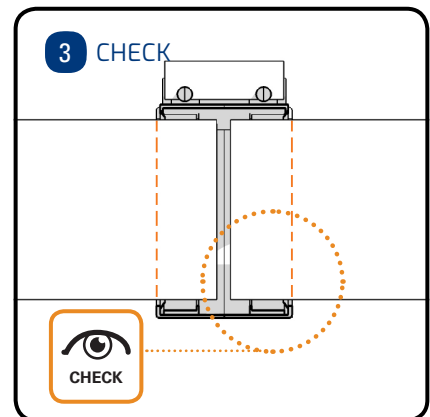
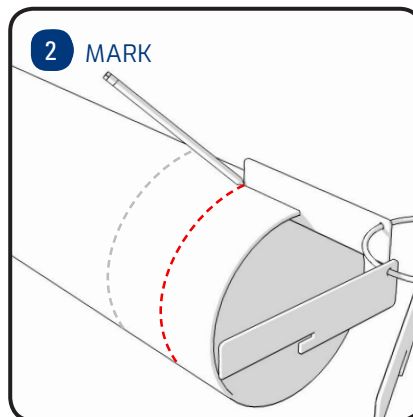
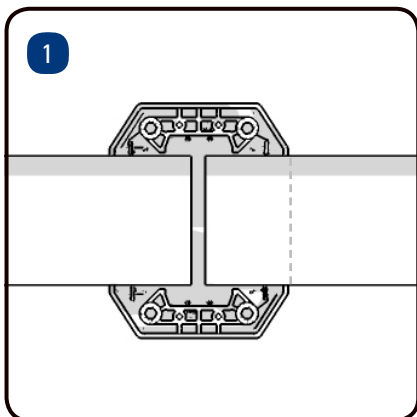
Diameters 63 – 80 mm / 2 1/2" - 3"



Note: When replacing the Classic Series with the Black Series only a new marking is needed, no cutting of pipes.

Replace old D100 fittings with new D100 fittings

Diameter 100 mm / 4"

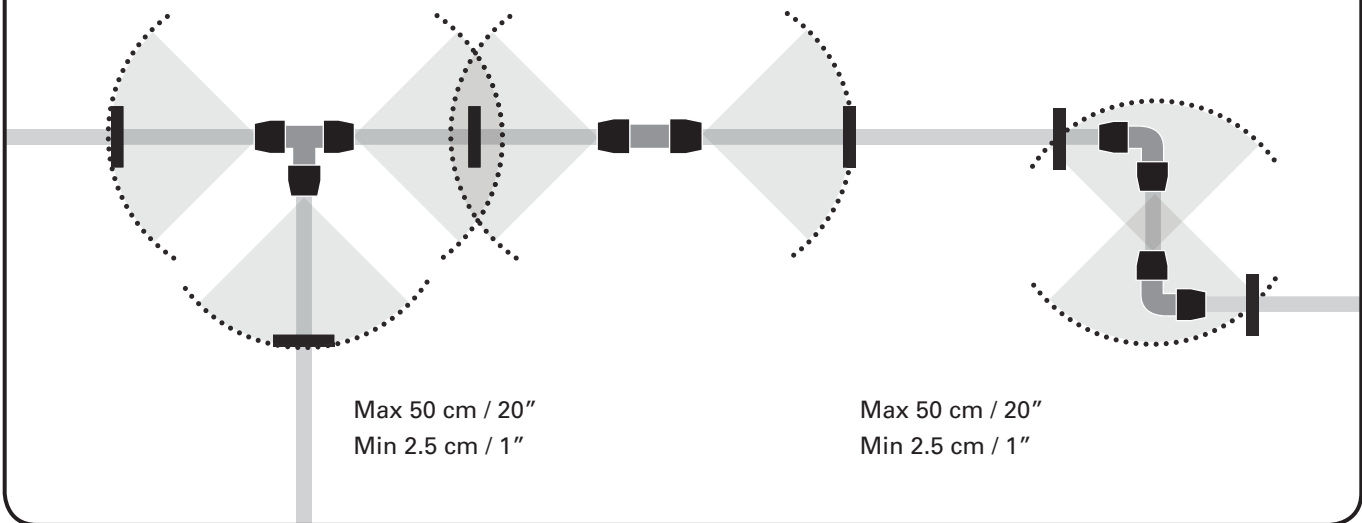


Note: When replacing the old D100 fitting with the new D100 fitting, only a new marking is needed, no cutting of pipes.

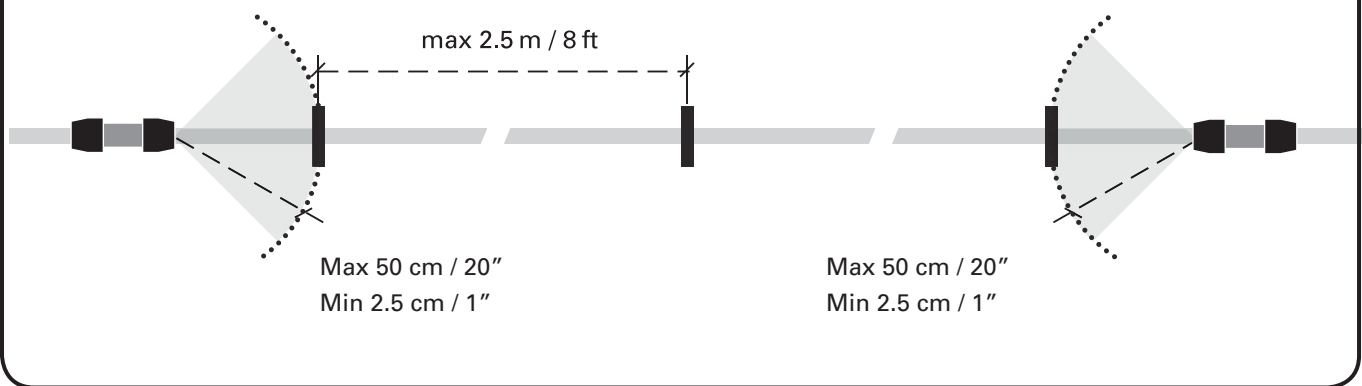
Pipe Clips Installation

Diameters 20 - 158 mm / ¾" - 6"

Rule #1: Every side of a fitting should have minimum 1 pipe clip within a distance of max 0.5 m / 20"

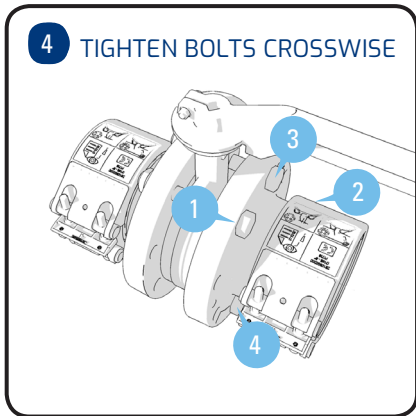
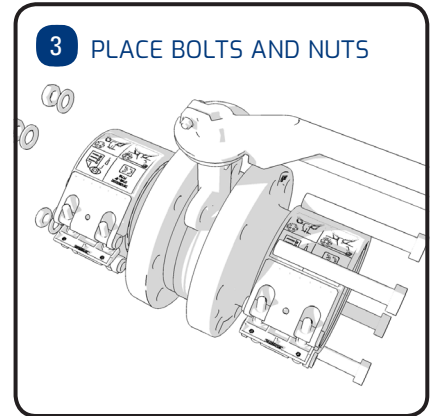
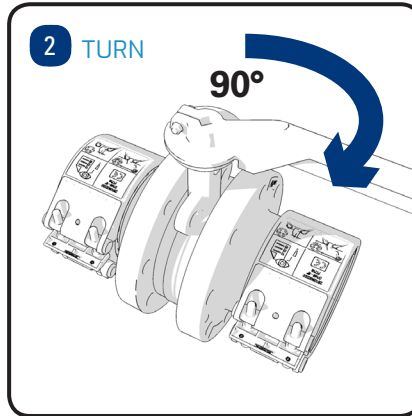
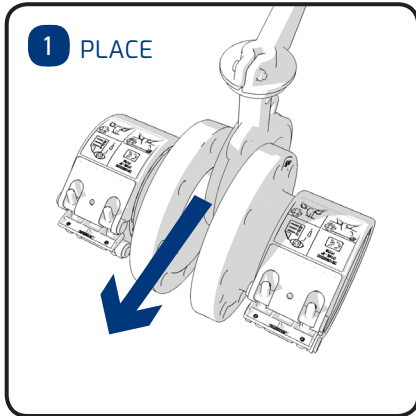


Rule #2: Maximum 2.5 m / 8 ft between 2 pipe clips



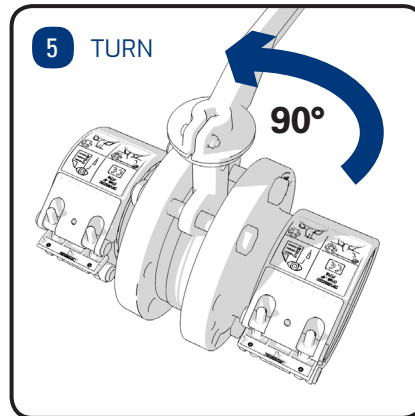
Butterfly Valve Installation

Diameters 100 & 158 mm / 4" & 6"



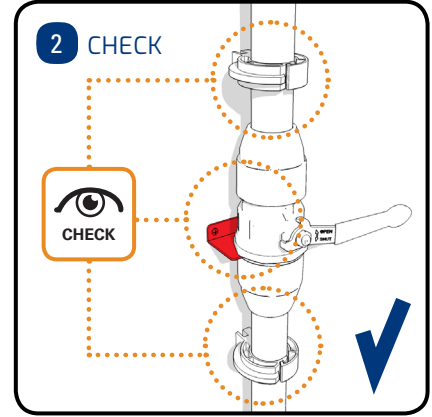
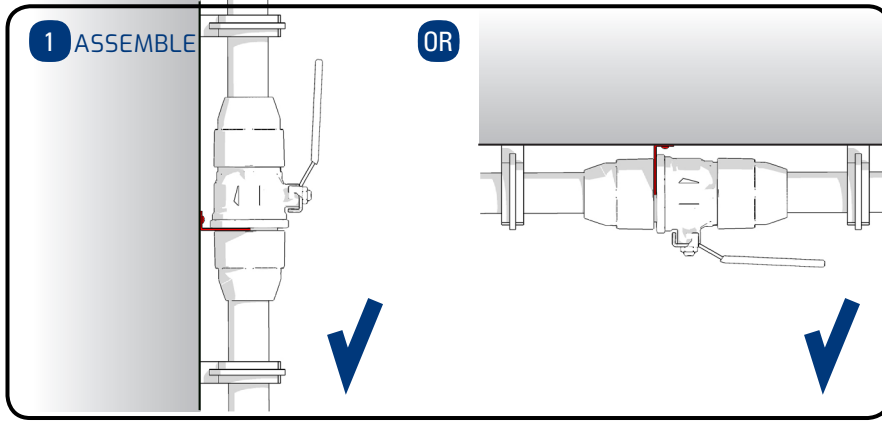
D100
16 Nm
12 lbs/ft

D158
38 Nm
28 lbs/ft

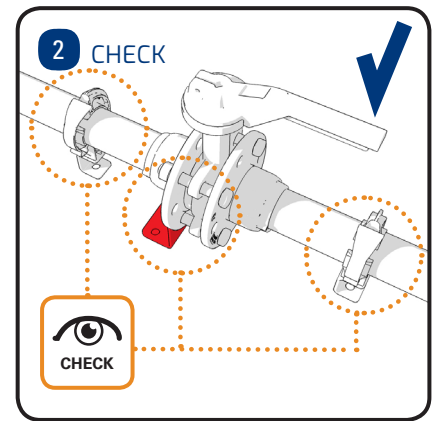
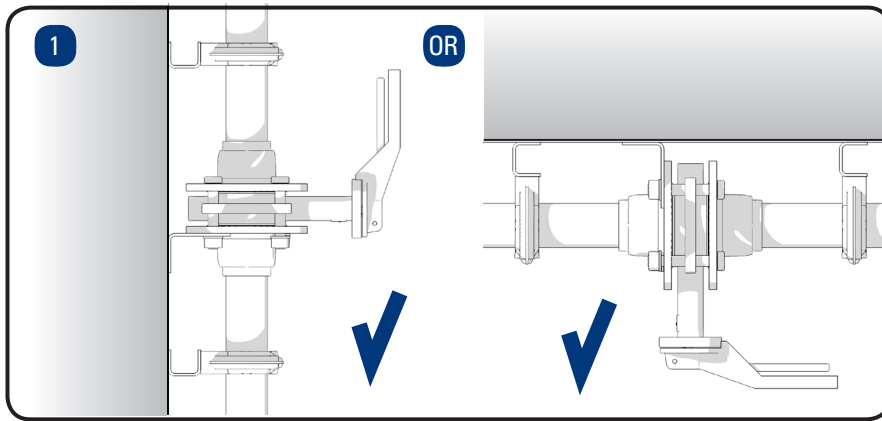


Valve Support

Diameters 20 – 50 mm / ¾" - 2"

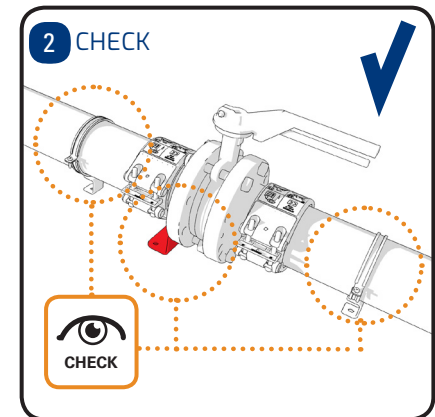
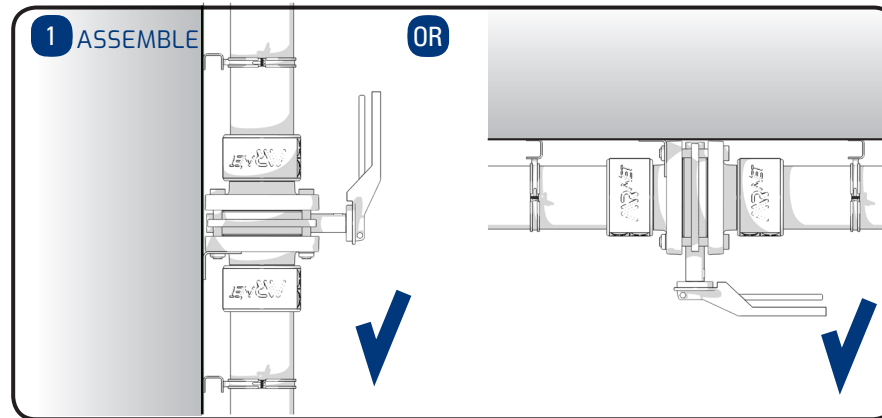


Diameters 63 – 80 mm / 2½" – 3"

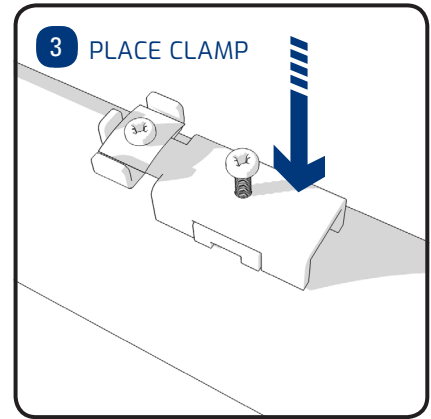
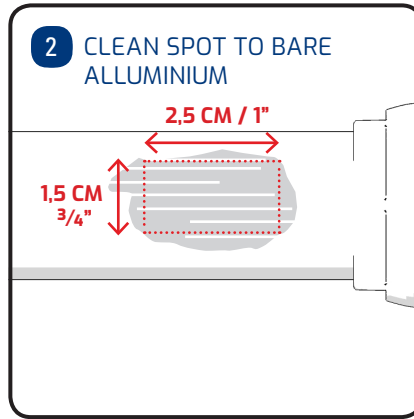
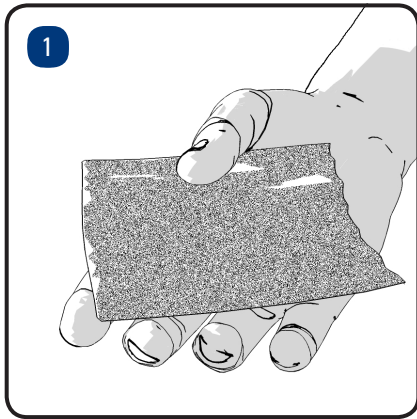


Note: The butterfly valves for 63 mm and 80 mm are delivered pre-assembled with the flanges.

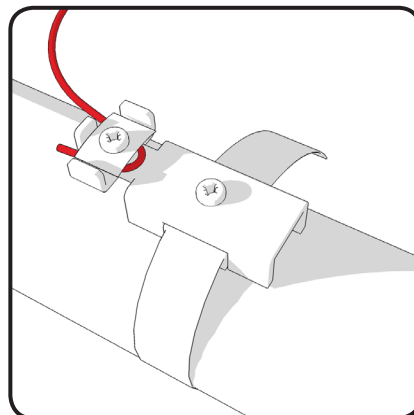
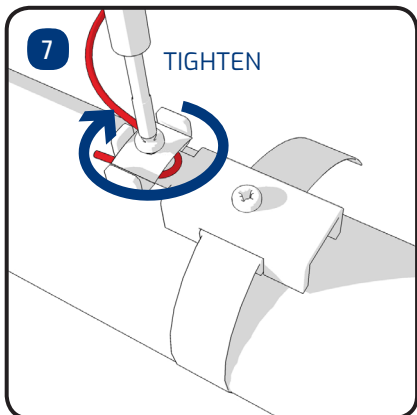
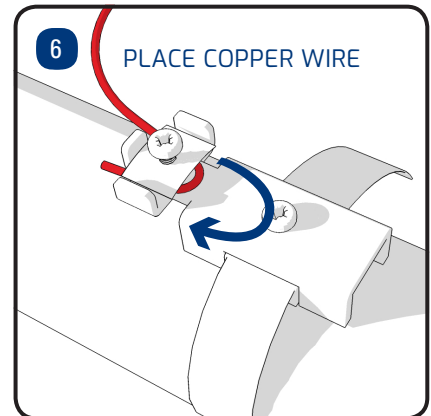
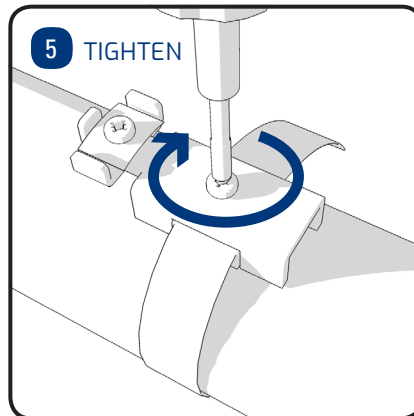
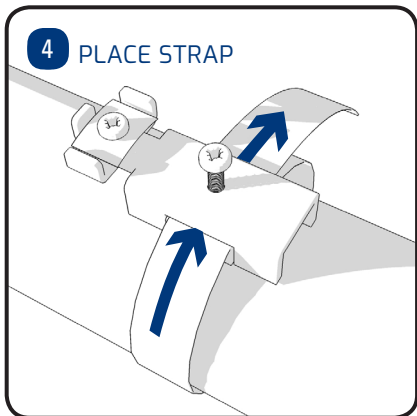
Diameter 100 – 158 mm / 4" – 6"



Mounting Conductivity Strap

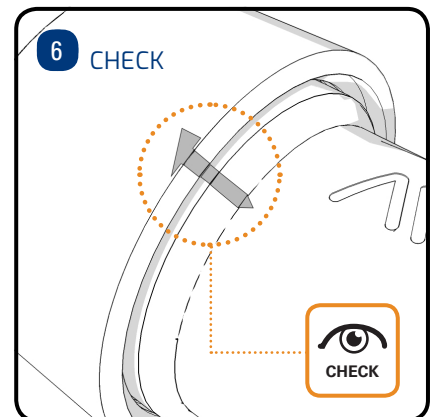
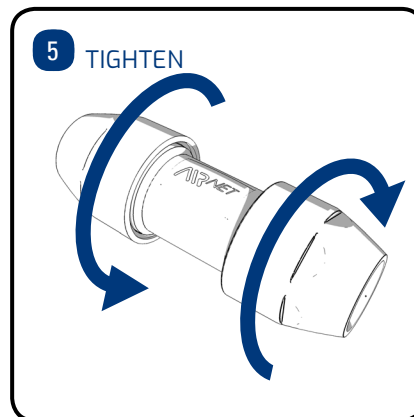
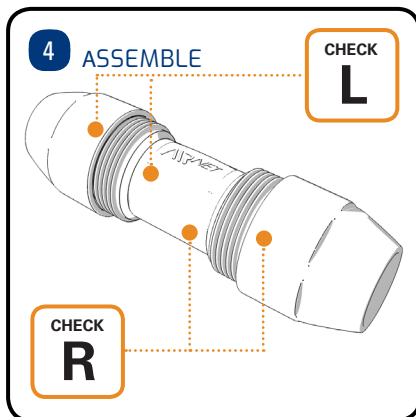
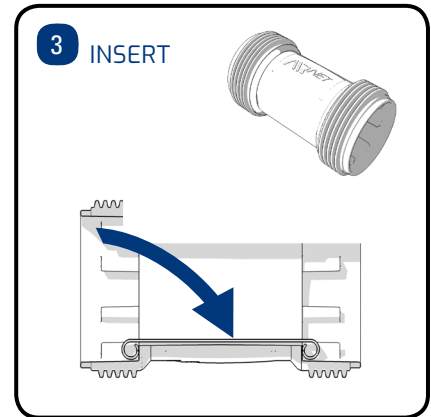
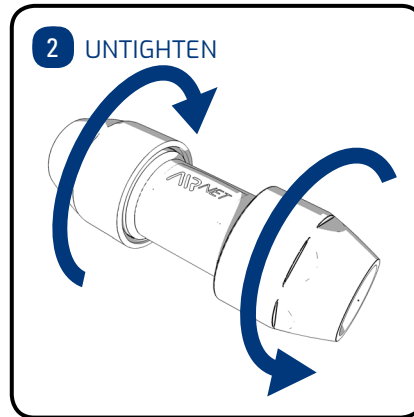
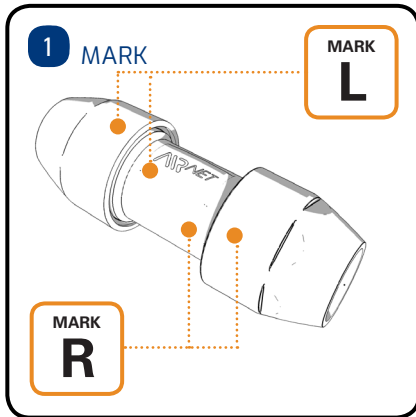
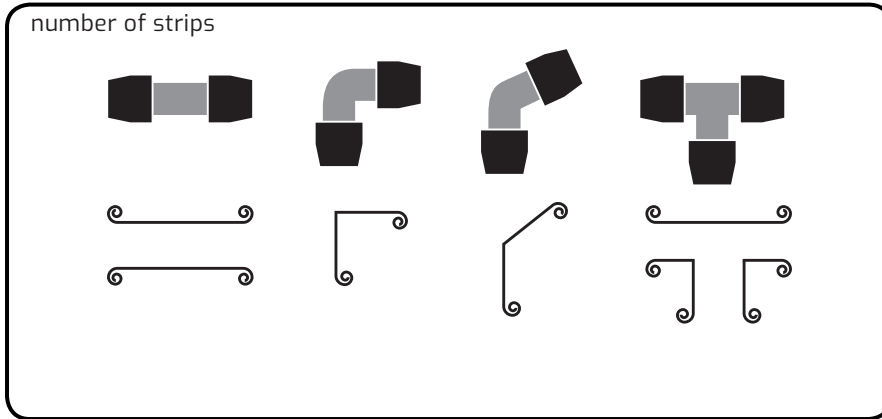


2810 0191 00



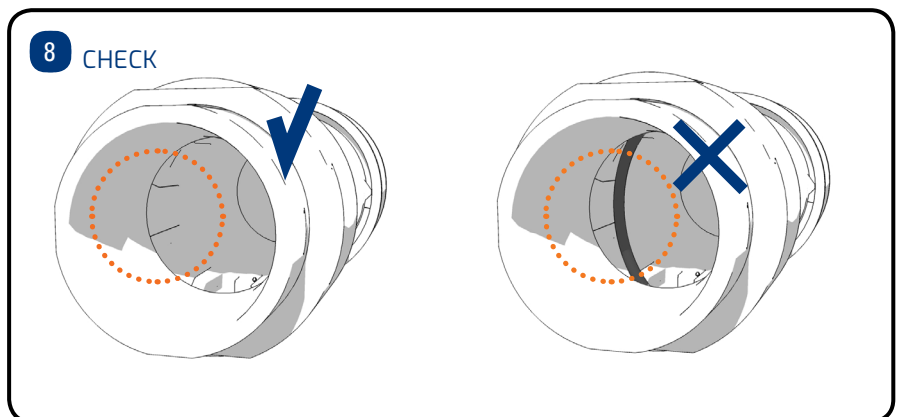
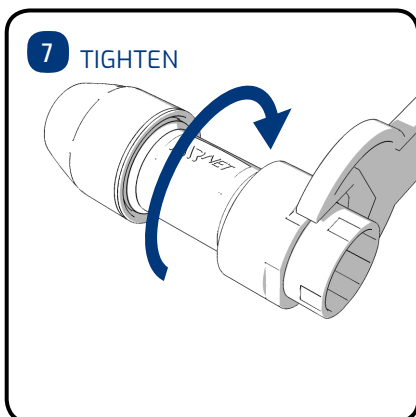
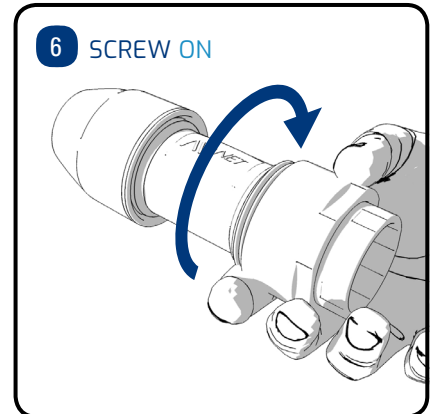
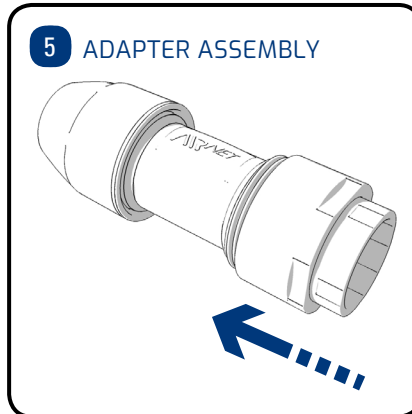
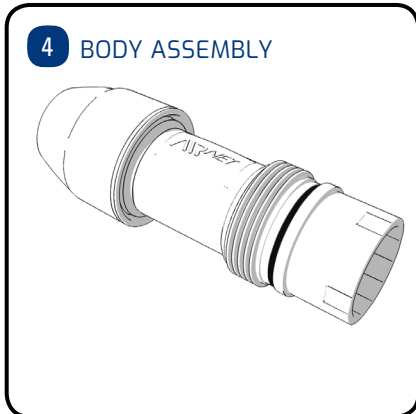
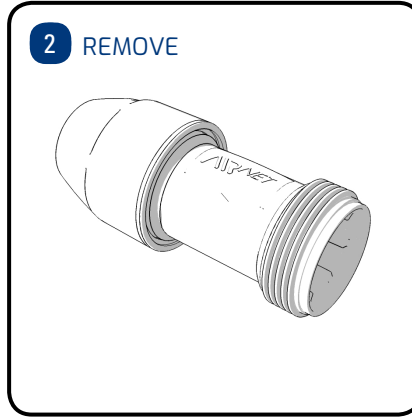
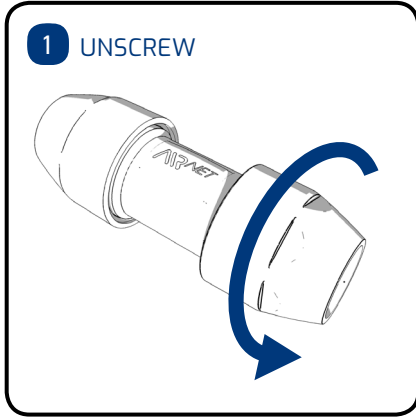
Mounting Conductivity Strip

PF Series only



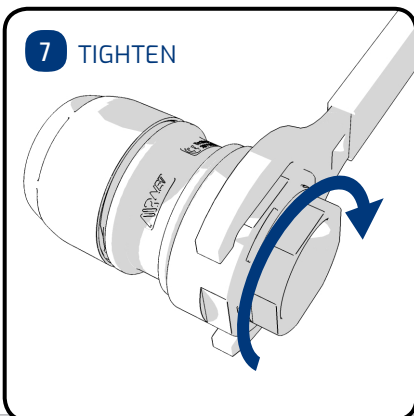
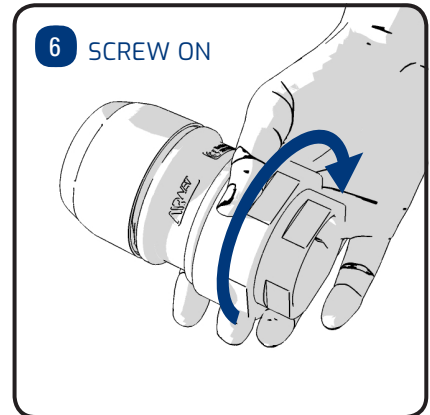
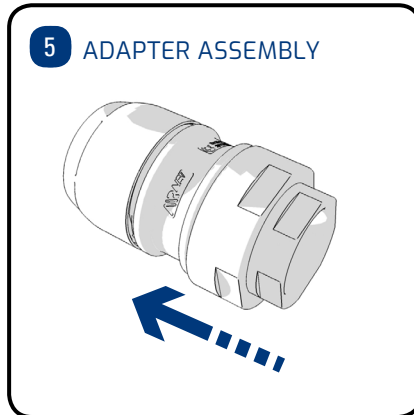
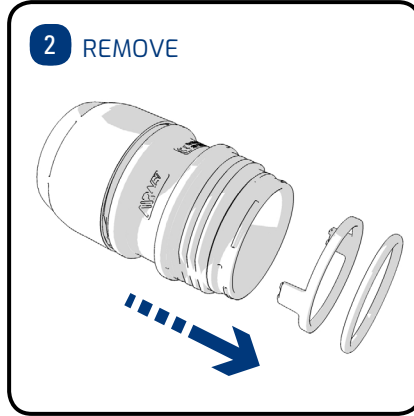
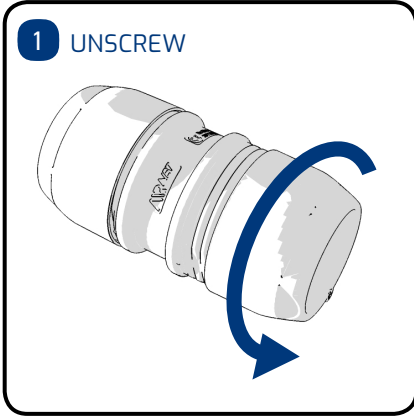
Adapter Union

PF series Diameters 20 – 50 mm / ¾" - 2"



Adapter Union

Black Series Diameters 63 – 80 mm / 2½" – 3"



Appendix A: ISO 8573-1:2010

AIRnet fulfills the requirements of ISO 8573-1:2010 (1:2:0) provided that:

- A system purge is executed with compressed air after the installation, for at least 24 hours
- A properly sized certified point of use particle filter is used
- Only NSF approved lubricant 2810 0248 00 is used
- The intake air of the compressed air system fulfills the requirements of ISO 8573-1:2010 (1:2:0)

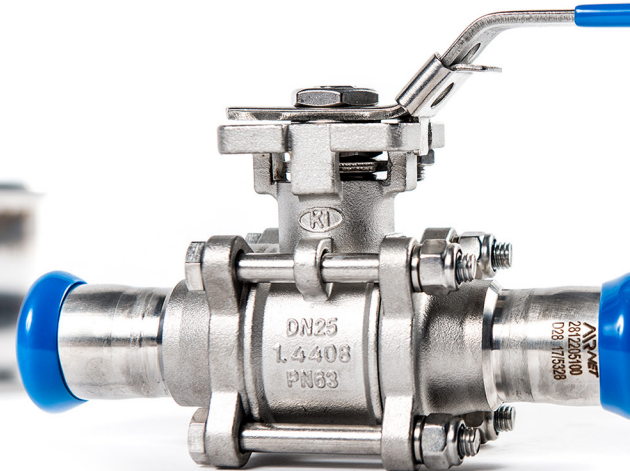
Without a point of use filter installed, AIRnet fulfills ISO 8573-1:2010 (2.2.0).

AIRnet ball valves and butterfly valves are excluded from the certificate.

When applicable, always check the compatibility of AIRnet components with the applied cleaning processes.



Stainless Steel Products



Stainless Steel Product Information



AIRnet stainless steel is a piping system designed to deliver a fast, easy, reliable and clean distribution network for compressed air, nitrogen, vacuum specifically for industries that demand the highest quality of air.



Pipes

Product Range	Pipes SS304L: D15 (1/2"), D28 (1"), D35 (1 1/4"), D42 (1 1/2"), D54 (2"), D76 (2 3/4"), D89 (3 1/2"), D108 (4") Pipes SS316L: D15 (1/2"), D28 (1"), D42 (1 1/2")	Standard
Applications	Compressed Air, Vacuum, Inert Gas, Water...	
Material	Stainless Steel AISI 304L 1.4301 Stainless Steel AISI 316L 1.4404	EN10088 ASTM A666
Safety Factor	4, Burst pressure >928 PSI (> 64 bar)	
Working Pressure	232 PSI (16 Bar)	
Working Temperature	- 4°F to 248°F (-20°C to 120°C)	
Vacuum Level	0.29 PSI (20 mbar) abs	
Dewpoint	Lowest allowable pressure dewpoint is - 94°F (-70°C)	
Treatment	Annealing	

Fittings

Fittings	D15 (1/2"), D28 (1"), D35 (1 1/4"), D42 (1 1/2"), D54 (2"), D76 (2 3/4"), D89 (3 1/2"), D108 (4")	
Connections	Press fit system	
Materials	Stainless Steel AISI 316L 1.4404	EN10088 ASTM A666
Seal Fittings	FKM (fluoroelastomer)	



304L Steel Piping

Part Number	Description	AIRnet Ø (mm)	AIRnet Ø (in)
2812 1000 01	Pipe 304L D15 (1/2")	15	1/2"
2812 2000 01	Pipe 304L D28 (1")	28	1"
2812 3000 01	Pipe 304 L D35 (1 1/4")	35	1 1/4"
2812 4000 00	Pipe 304L D42 (1 1/2")	42	1 1/2"
2812 5000 00	Pipe 304L D54 (2")	54	2"
2812 6000 01	Pipe 304L D76 (2 3/4")	76	2 3/4"
2812 7000 01	Pipe 304L D89 (3 1/2")	89	3 1/2"
2812 8000 01	Pipe 304L D108 (4")	108	4"



316L Steel Piping

Part Number	Description	AIRnet Ø (mm)	AIRnet Ø (in)
2812 1001 01	Pipe 316L D15 (1/2")	15	1/2"
2812 2001 01	Pipe 316L D28 (1")	28	1"
2812 4001 00	Pipe 316L D42 (1 1/2")	42	1 1/2"



Quick Drop Saddle Clamps

Part Number	Description	Dimensions (mm)	Dimensions (in)
2812 6310 00	Quick Drop 316L D76 x D35	76 x 35	2 3/4" x 1 1/4"
2812 7410 00	Quick Drop 316L D89 x D42	89 x 42	3 1/2" x 1 1/2"
2812 8510 00	Quick Drop 316L D108 x D54	108 x 54	4" x 2"



Swan Neck

Part Number	Description	AIRnet Ø (mm)	AIRnet Ø (in)
2812 1067 00	Swan Neck 316L D15 (1/2")	15	1/2"
2812 2067 00	Swan Neck 316L D28 (1")	28	1"



45° Elbow

Part Number	Description	AIRnet Ø (mm)	AIRnet Ø (in)
2812 1004 00	Elbow 45 Deg 316L D15 (1/2")	15	1/2"
2812 2004 00	Elbow 45 Deg 316L D28 (1")	28	1"
2812 3004 00	Elbow 45 deg 316L D35 (1 1/4")	35	1 1/4"
2812 4004 00	Elbow 45 deg 316L D42 (1 1/2")	42	1 1/2"
2812 5004 00	Elbow 45 deg 316L D54 (2")	54	2"
2812 6004 00	Elbow 45 deg 316L D76 (2 3/4")	76	2 3/4"
2812 7004 00	Elbow 45 deg 316L D89 (3 1/2")	89	3 1/2"
2812 8004 00	Elbow 45 deg 316L D108 (4")	108	4"



90° Elbow

Part Number	Description	AIRnet Ø (mm)	AIRnet Ø (in)
2812 1003 00	Elbow 90 Deg 316L D15 (1/2")	15	1/2"
2812 2003 00	Elbow 90 Deg 316L D28 (1")	28	1"
2812 3003 00	Elbow 90 deg 316L D35 (1 1/4")	35	1 1/4"
2812 4003 00	Elbow 90 deg 316L D42 (1 1/2")	42	1 1/2"
2812 5003 00	Elbow 90 deg 316L D54 (2")	54	2"
2812 6003 00	Elbow 90 deg 316L D76 (2 3/4")	76	2 3/4"
2812 7003 00	Elbow 90 deg 316L D89 (3 1/2")	89	3 1/2"
2812 8003 00	Elbow 90 deg 316L D108 (4")	108	4"



Equal Tees

Part Number	Description	AIRnet Ø (mm)	AIRnet Ø (in)
2812 1005 00	Equal Tee 316L D15 (1/2")	15	1/2"
2812 2005 00	Equal Tee 316L D28 (1")	28	1"
2812 3005 00	Equal Tee 316L D35 (1 1/4")	35	1 1/4"
2812 4005 00	Equal Tee 316L D42 (1 1/2")	42	1 1/2"
2812 5005 00	Equal Tee 316L D54 (2")	54	2"
2812 6005 00	Equal Tee 316L D76 (2 3/4")	76	2 3/4"
2812 7005 00	Equal Tee 316L D89 (3 1/2")	89	3 1/2"
2812 8005 00	Equal Tee 316L D108 (4")	108	4"



Reducing Tees

Part Number	Description	AIRnet Ø (mm)	AIRnet Ø (in)
2812 2107 00	Reducing Tee 316L D28 x D15 (1"x1/2")	28	1"
2812 3207 00	Reducing Tee 316 L D35 x D28 (1 1/4"x1")	35	1 1/4"
2812 4307 00	Reducing Tee 316 L D42 x D35 (1 1/2"x1 1/4")	42	1 1/2"
2812 5407 00	Reducing Tee 316 L D54 x D42 (2"x1 1/2")	54	2"
2812 6507 00	Reducing Tee 316 L D76 x D54 (2 3/4"x2")	76	2 3/4"
2812 7607 00	Reducing Tee 316 L D89 x D76 (3 1/2"x2 3/4")	89	3 1/2"
2812 8707 00	Reducing Tee 316 L D108 x D89 (4"x3 1/2")	108	4"



Reducing Tee Female NPT

Part Number	Description	AIRnet Ø (mm)	AIRnet Ø (in)
2812 1009 00	Threaded Reducing Tee 316L D15x1/2" (1/2"x1/2") NPT	15	1/2"
2812 2109 00	Threaded Reducing Tee 316L D28x3/4" (1"x3/4") NPT	28	1"
2812 3109 00	Threaded Reducing Tee 316L D35x3/4" (1 1/4"x3/4") NPT	35	1 1/4"
2812 4109 00	Threaded Reducing Tee 316L D42x3/4" (1 1/2"x3/4") NPT	42	1 1/2"
2812 5109 00	Threaded Reducing Tee 316L D54x3/4" (2"x3/4") NPT	54	2"
2812 6109 00	Threaded Reducing Tee 316L D76x3/4" (2 3/4"x3/4") NPT	76	2 3/4"
2812 7109 00	Threaded Reducing Tee 316L D89x3/4" (3 1/2"x3/4") NPT	89	3 1/2"
2812 8109 00	Threaded Reducing Tee 316L D108x3/4" (4"x3/4") NPT	108	4"



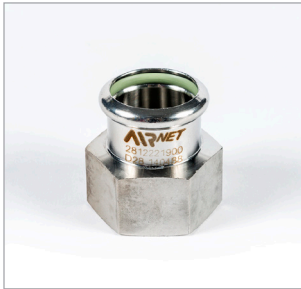
Equal Unions

Part Number	Description	AIRnet Ø (mm)	AIRnet Ø (in)
2812 1002 00	Equal Socket 316L D15 (1/2")	15	1/2"
2812 2002 00	Equal Socket 316L D28 (1")	28	1"
2812 3002 00	Equal Socket 316L D35 (1 1/4")	35	1 1/4"
2812 4002 00	Equal Socket 316L D42 (1 1/2")	42	1 1/2"
2812 5002 00	Equal Socket 316L D54 (2")	54	2"
2812 6002 00	Equal Socket 316L D76 (2 3/4")	76	2 3/4"
2812 7002 00	Equal Socket 316L D89 (3 1/2")	89	3 1/2"
2812 8002 00	Equal Socket 316L D108 (4")	108	4"



Nipple Socket Male NPT

Part Number	Description	AIRnet Ø (mm)	AIRnet Ø (in)
2812 1018 00	Nipple Socket Male 316L D15x1/2" (1/2"x1/2") NPT	15	1/2"
2812 1118 00	Nipple Socket Male 316L D15x3/4" (1/2"x3/4") NPT	15	1/2"
2812 2118 00	Nipple Socket Male 316L D28x3/4" (1"x3/4") NPT	28	1"
2812 2218 00	Nipple Socket Male 316L D28x1" (1"x1") NPT	28	1"
2812 3218 00	Nipple Socket Male 316L D35x1" (1 1/4"x1") NPT	35	1 1/4"
2812 3318 00	Nipple Socket Male 316L D35x1 1/4" (1 1/4"x1 1/4") NPT	35	1 1/4"
2812 4318 00	Nipple Socket Male 316L D42x1 1/4" (1 1/2"x1 1/4") NPT	42	1 1/2"
2812 4418 00	Nipple Socket Male 316L D42x1 1/2" (1 1/2"x1 1/2") NPT	42	1 1/2"
2812 5418 00	Nipple Socket Male 316L D54x1 1/2" (2"x1 1/2") NPT	54	2"
2812 5518 00	Nipple Socket Male 316L D54x2" (2"x2") NPT	54	2"
2812 6618 00	Nipple Socket Male 316L D76x2 1/2" (2 3/4"x2 1/2") NPT	76	2 3/4"
2812 7718 00	Nipple Socket Male 316L D89x3" (3 1/2"x3") NPT	89	3 1/2"
2812 8818 00	Nipple Socket Male 316L D108x4" (4"x4") NPT	108	4"



Nipple Socket Female NPT

Part Number	Description	AIRnet Ø (mm)	AIRnet Ø (in)
2812 1120 00	Nipple Socket Female 316L D15x3/4" (1/2"x3/4") NPT	15	1/2"
2812 2220 00	Nipple Socket Female 316L D28x1" (1"x1") NPT	28	1"
2812 3320 00	Nipple Socket Female 316L D35x1 1/4" (1 1/4"x1 1/4") NPT	35	1 1/4"
2812 4420 00	Nipple Socket Female 316L D42x1 1/2" (1 1/2"x1 1/2") NPT	42	1 1/2"
2812 5520 00	Nipple Socket Female 316L D54x2" (2"x2") NPT	54	2"



End Cap

Part Number	Description	AIRnet Ø (mm)	AIRnet Ø (in)
2812 1006 00	End Cap 316L D15 (1/2")	15	1/2"
2812 2006 00	End Cap 316L D28 (1")	28	1"
2812 3006 00	End Cap 316L D35 (1 1/4")	35	1 1/4"
2812 4006 00	End Cap 316L D42 (1 1/2")	42	1 1/2"
2812 5006 00	End Cap 316L D54 (2")	54	2"
2812 6006 00	End Cap 316L D76 (2 3/4")	76	2 3/4"
2812 7006 00	End Cap 316L D89 (3 1/2")	89	3 1/2"
2812 8006 00	End Cap 316L D108 (4")	108	4"



Wall Mounted Manifold Female NPT

Part Number	Description	AIRnet Ø (mm)	AIRnet Ø (in)
2812 1041 00	Wall Mounted Nipple 316L D15x1/2"	15	1/2" x 1/2"



Reducing Union

Part Number	Description	Dimensions (mm)	Dimensions (in)
2812 2121 00	Reducer Male x Female 316L D28xD15	28 x 15	1" x 1/2"
2812 3221 00	Reducer Male x Female 316L D35xD28	35 x 28	1 1/4" x 1"
2812 4321 00	Reducer Male x Female 316L D42xD35	42 x 35	1 1/2" x 1 1/4"
2812 5421 00	Reducer Male x Female 316L D54xD42	54 x 42	2" x 1 1/2"
2812 6521 00	Reducer Male x Female 316L D76xD54	76 x 54	2 3/4" x 2"
2812 7621 00	Reducer Male x Female 316L D89xD76	89 x 76	3 1/2" x 2 3/4"
2812 8721 00	Reducer Male x Female 316L D108xD89	108 x 89	4" x 3 1/2"



Adapter Union Female NPT

Part Number	Description	AIRnet Ø (mm)	AIRnet Ø (in)
2812 1114 00	Adapter Union Female 316L D15x3/4" (1/2"x3/4") NPT	15	1/2"
2812 2214 00	Adapter Union Female 316L D28x1" (1"x1") NPT	28	1"
2812 3314 00	Adapter Union Female 316L D35x1 1/4" (1 1/4"x1 1/4") NPT	35	1 1/4"
2812 4414 00	Adapter Union Female 316L D42x1 1/2" (1 1/2"x1 1/2") NPT	42	1 1/2"
2812 5514 00	Adapter Union Female 316L D54x2" (2"x2") NPT	54	2"



DIN Flanges

Part Number	Description	AIRnet Ø (mm)	AIRnet Ø (in)
2812 1054 00	Flange 316L D15 (1/2") DIN PN16	15	1/2"
2812 2054 00	Flange 316L D28 (1") DIN PN16	28	1"
2812 3054 00	Flange 316L D35 (1 1/4") DIN PN16	35	1 1/4"
2812 4054 00	Flange 316L D42 (1 1/2") DIN PN16	42	1 1/2"
2812 5054 00	Flange 316L D54 (2") DIN PN16	54	2"
2812 6054 00	Flange 316L D76 (2 3/4") DIN PN16	76	2 3/4"
2812 7054 00	Flange 316L D89 (3 1/2") DIN PN16	89	3 1/2"
2812 8054 00	Flange 316L D108 (4") DIN PN16	108	4"



ANSI Flanges

Part Number	Description	AIRnet Ø (mm)	AIRnet Ø (in)
2812 1154 00	Flange 316L D15 (1/2") ANSI CL150	15	1/2"
2812 2154 00	Flange 316L D28 (1") ANSI CL150	28	1"
2812 3154 00	Flange 316L D35 (1 1/4") ANSI CL150	35	1 1/4"
2812 4154 00	Flange 316L D42 (1 1/2") ANSI CL150	42	1 1/2"
2812 5154 00	Flange 316L D54 (2") ANSI CL150	54	2"
2812 6154 00	Flange 316L D76 (2 3/4") ANSI CL150	76	2 3/4"
2812 7154 00	Flange 316L D89 (3 1/2") ANSI CL150	89	3 1/2"
2812 8154 00	Flange 316L D108 (4") ANSI CL150	108	4"



Flange Gaskets

Part Number	Description	AIRnet Ø (mm)	AIRnet Ø (in)
0650 0100 43	Gasket for Flange D15 (1/2") PN10 -16 / ANSI CL150	15	1/2"
0650 0100 99	Gasket for Flange D28 (1") PN10 -16	28	1"
0650 0101 06	Gasket for Flange D28 (1") ANSI CL150	28	1"
0650 1001 12	Gasket for Flange D35 (1 1/4") PN10 -16 / ANSI CL150	35	1 1/4"
0650 1000 87	Gasket for Flange D42 (1 1/2") PN10 -16	42	1 1/2"
0650 0100 09	Gasket for Flange D54 (2") PN10 -16 / ANSI CL150	54	2"
0650 1001 07	Gasket for Flange D76 (2 3/4") PN10 -16	76	2 3/4"
0650 1001 19	Gasket for Flange D76 (2 3/4") ANSI CL150	76	2 3/4"
0650 1001 27	Gasket for Flange D89 (3 1/2") PN10 -16 / ANSI CL150	89	3 1/2"
0650 0100 06	Gasket for Flange D108 (4") PN10 -16 / ANSI CL150	108	4"



Isolation Valves

Part Number	Description	AIRnet Ø (mm)	AIRnet Ø (in)
2812 1051 00	Ball Valve 316L D15 (1/2")	15	1/2"
2812 2051 00	Ball Valve 316L D28 (1")	28	1"
2812 3051 00	Ball Valve 316L D35 (1 1/4")	35	1 1/4"
2812 4051 00	Ball Valve 316L D42 (1 1/2")	42	1 1/2"
2812 5051 00	Ball Valve 316L D54 (2")	54	2"
2812 6051 00	Ball Valve 316L D76 (2 3/4")	76	2 3/4"
2812 7051 00	Ball Valve 316L D89 (3 1/2")	89	3 1/2"
2812 8051 00	Ball Valve 316L D108 (4")	108	4"



Compensator

Part Number	Description	AIRnet Ø (mm)	AIRnet Ø (in)
2812 1055 00	Compensator 316L D15 (1/2")	15	1/2"
2812 2055 00	Compensator 316L D28 (1")	28	1"
2812 3055 00	Compensator 316L D35 (1 1/4")	35	1 1/4"
2812 4055 00	Compensator 316L D42 (1 1/2")	42	1 1/2"
2812 5055 00	Compensator 316L D54 (2")	54	2"



Pipe Clip UNC

Part Number	Description	AIRnet Ø (mm)	AIRnet Ø (in)	Pack Quantity
2812 1122 20	Pipe Clip 304L D15 (1/2") 3/8" UNC 20PCS	15	1/2"	20
2812 2122 20	Pipe Clip 304L D28 (1") 3/8" UNC 20PCS	28	1"	20
2812 3122 20	Pipe Clip 304L D35 (1 1/4") 3/8" UNC 20PCS	35	1 1/4"	20
2812 4122 20	Pipe Clip 304L D42 (1 1/2") 3/8" UNC 20PCS	42	1 1/2"	20
2812 5122 20	Pipe Clip 304L D54 (2") 3/8" UNC 20PCS	54	2"	20
2812 6122 20	Pipe Clip 304L D76 (2 3/4") 3/8" UNC 20PCS	76	2 3/4"	20
2812 7122 20	Pipe Clip 304L D89 (3 1/2") 3/8" UNC 20PCS	89	3 1/2"	20
2812 8122 20	Pipe Clip 304L D108 (4") 3/8" UNC 20PCS	108	4"	20



Spare / Replacement O-Rings

Part Number	Description	AIRnet Ø (mm)	AIRnet Ø (in)	Pack Quantity
2812 1065 20	O-Ring Kit D15 (1/2")	15	1/2"	20
2812 2065 20	O-Ring Kit D28 (1")	28	1"	20
2812 3065 20	O-Ring Kit D35 (1 1/4")	35	1 1/4"	20
2812 4065 20	O-Ring Kit D42 (1 1/2")	42	1 1/2"	20
2812 5065 20	O-Ring Kit D54 (2")	54	2"	20
2812 6065 10	O-Ring Kit D76 (2 3/4")	76	2 3/4"	10
2812 7065 10	O-Ring Kit D89 (3 1/2")	89	3 1/2"	10
2812 8065 10	O-Ring Kit D108 (4")	108	4"	10



Crimping Tools

Part Number	Description	AIRnet Ø (mm)	AIRnet Ø (in)
2812 0028 00	Pressing Tool D15-D54 (1/2" - 2")	15 - 54	1/2" - 2"
2812 4528 00	Pressing Tool D42-D54 (1 1/2" - 2")	42 - 54	1 1/2" - 2"
2812 0128 00	Pressing Tool D76-D108 (2 3/8" - 4")	76 - 108	2 3/4" - 4"
2812 0228 00	Battery	/	/
2812 0328 00	Charger	/	/
2812 0428 00	Power Cable	/	/



Crimping Tool Heads

Part Number	Description	AIRnet Ø (mm)	AIRnet Ø (in)
2812 1028 00	Tool Jaw D15 (1/2")	15	1/2"
2812 2028 00	Tool Jaw D28 (1")	28	1"
2812 3028 00	Tool Jaw D35 (1 1/4")	35	1 1/4"
2812 4028 00	Tool Jaw D42 (1 1/2")	42	1 1/2"
2812 5028 00	Tool Jaw D54 (2")	54	2"
2812 6028 00	Tool Jaw D76 (2 3/4")	76	2 3/4"
2812 7028 00	Tool Jaw D89 (3 1/2")	89	3 1/2"
2812 8028 00	Tool Jaw D108 (4")	108	4"



Pipe Deburring Tool Stainless Steel

Part Number	AIRnet Ø (mm)	AIRnet Ø (in)
2810 0041 00	20-25	3/4" - 1"
2810 0141 00	20-50	3/4" - 2"
2810 0841 00	63-100	2 1/2" - 6"



Pipe Fitting Depth Gauge Stainless Steel

Part Number	AIRnet Ø (mm)	AIRnet Ø (in)
2812 0029 80	20-158	3/4" - 6"

Stainless Steel Sizing Charts



58 PSI

Flow cfm	Length										
	82ft	164ft	328ft	492ft	656ft	984ft	1312ft	1641ft	3281ft	4922ft	6562ft
8	1/2"	1/2"	1"	1"	1"	1"	1"	1"	1"	1"	1"
23	1"	1"	1"	1"	1"	1"	1 1/4"	1 1/4"	1 1/2"	1 1/2"	1 1/2"
32	1"	1"	1"	1"	1 1/4"	1 1/4"	1 1/4"	1 1/4"	1 1/2"	2"	2"
42	1"	1"	1"	1 1/4"	1 1/4"	1 1/4"	1 1/2"	1 1/2"	2"	2"	2"
62	1"	1"	1 1/4"	1 1/4"	1 1/2"	1 1/2"	1 1/2"	2"	2"	2"	2 3/4"
71	1"	1 1/4"	1 1/4"	1 1/2"	1 1/2"	1 1/2"	2"	2"	2"	2 3/4"	2 3/4"
88	1"	1 1/4"	1 1/2"	1 1/2"	1 1/2"	2"	2"	2"	2 3/4"	2 3/4"	2 3/4"
106	1 1/4"	1 1/4"	1 1/2"	1 1/2"	2"	2"	2"	2"	2 3/4"	2 3/4"	2 3/4"
124	1 1/4"	1 1/2"	1 1/2"	2"	2"	2"	2"	2 3/4"	2 3/4"	2 3/4"	2 3/4"
159	1 1/4"	1 1/2"	2"	2"	2"	2 3/4"	2 3/4"	2 3/4"	2 3/4"	2 3/4"	3 1/2"
212	1 1/2"	2"	2"	2"	2 3/4"	2 3/4"	2 3/4"	2 3/4"	3 1/2"	3 1/2"	4"
247	1 1/2"	2"	2"	2 3/4"	2 3/4"	2 3/4"	2 3/4"	2 3/4"	3 1/2"	3 1/2"	4"
300	2"	2"	2 3/4"	2 3/4"	2 3/4"	2 3/4"	2 3/4"	3 1/2"	3 1/2"	4"	4"
424	2"	2 3/4"	2 3/4"	2 3/4"	2 3/4"	3 1/2"	3 1/2"	3 1/2"	4"	4"	4"
530	2"	2 3/4"	2 3/4"	2 3/4"	3 1/2"	3 1/2"	4"	4"	4"	4"	4"
636	2 3/4"	2 3/4"	2 3/4"	3 1/2"	3 1/2"	4"	4"	4"	4"	4"	4"
742	2 3/4"	2 3/4"	3 1/2"	3 1/2"	3 1/2"	4"	4"	4"	4"	4"	4"
918	2 3/4"	2 3/4"	3 1/2"	4"	4"	4"	4"	4"	4"	4"	4"
1095	2 3/4"	3 1/2"	3 1/2"	4"	4"	4"	4"	4"	4"	4"	4"
1165	2 3/4"	3 1/2"	4"	4"	4"	4"	4"	4"	4"	4"	4"
1554	3 1/2"	3 1/2"	4"	4"	4"	4"	4"	4"	4"	4"	4"
1766	3 1/2"	4"	4"	4"	4"	4"	4"	4"	4"	4"	4"
2048	3 1/2"	4"	4"	4"	4"	4"	4"	4"	4"	4"	4"
2366	3 1/2"	4"	4"	4"	4"	4"	4"	4"	4"	4"	4"
2648	4"	4"	4"	4"	4"	4"	4"	4"	4"	4"	4"
2931	4"	4"	4"	4"	4"	4"	4"	4"	4"	4"	4"
3249	4"	4"	4"	4"	4"	4"	4"	4"	4"	4"	4"
3531	4"	4"	4"	4"	4"	4"	4"	4"	4"	4"	4"

*Compressed Air Only

Stainless Steel Sizing Charts



102 PSI

Flow	Length										
	82ft	164ft	328ft	492ft	656ft	984ft	1312ft	1641ft	3281ft	4922ft	6562ft
8	1/2"	1/2"	1"	1"	1"	1"	1"	1"	1"	1"	1"
23	1/2"	1"	1"	1"	1"	1"	1"	1"	1 1/4"	1 1/4"	1 1/4"
32	1"	1"	1"	1"	1"	1"	1"	1"	1 1/4"	1 1/4"	1 1/2"
42	1"	1"	1"	1"	1"	1"	1 1/4"	1 1/4"	1 1/2"	1 1/2"	1 1/2"
62	1"	1"	1"	1"	1 1/4"	1 1/4"	1 1/4"	1 1/2"	1 1/2"	2"	2"
71	1"	1"	1"	1 1/4"	1 1/4"	1 1/4"	1 1/2"	1 1/2"	2"	2"	2"
88	1"	1"	1 1/4"	1 1/4"	1 1/4"	1 1/2"	1 1/2"	1 1/2"	2"	2"	2"
106	1"	1"	1 1/4"	1 1/4"	1 1/2"	1 1/2"	1 1/2"	2"	2"	2"	2 3/4"
124	1"	1 1/4"	1 1/4"	1 1/2"	1 1/2"	1 1/2"	2"	2"	2"	2 3/4"	2 3/4"
159	1"	1 1/4"	1 1/2"	1 1/2"	1 1/2"	2"	2"	2"	2 3/4"	2 3/4"	2 3/4"
212	1 1/4"	1 1/2"	1 1/2"	2"	2"	2"	2"	2 3/4"	2 3/4"	2 3/4"	2 3/4"
247	1 1/4"	1 1/2"	2"	2"	2"	2"	2 3/4"	2 3/4"	2 3/4"	2 3/4"	3 1/2"
300	1 1/4"	1 1/2"	2"	2"	2"	2 3/4"	2 3/4"	2 3/4"	2 3/4"	3 1/2"	3 1/2"
424	1 1/2"	2"	2"	2 3/4"	2 3/4"	2 3/4"	2 3/4"	2 3/4"	3 1/2"	3 1/2"	4"
530	2"	2"	2 3/4"	2 3/4"	2 3/4"	2 3/4"	2 3/4"	3 1/2"	3 1/2"	4"	4"
636	2"	2"	2 3/4"	2 3/4"	2 3/4"	2 3/4"	3 1/2"	3 1/2"	4"	4"	4"
742	2"	2 3/4"	2 3/4"	2 3/4"	2 3/4"	3 1/2"	3 1/2"	3 1/2"	4"	4"	4"
918	2"	2 3/4"	2 3/4"	2 3/4"	3 1/2"	3 1/2"	4"	4"	4"	4"	4"
1095	2 3/4"	2 3/4"	2 3/4"	3 1/2"	3 1/2"	4"	4"	4"	4"	4"	4"
1165	2 3/4"	2 3/4"	2 3/4"	3 1/2"	3 1/2"	4"	4"	4"	4"	4"	4"
1554	2 3/4"	2 3/4"	3 1/2"	4"	4"	4"	4"	4"	4"	4"	4"
1766	2 3/4"	2 3/4"	3 1/2"	4"	4"	4"	4"	4"	4"	4"	4"
2048	2 3/4"	3 1/2"	4"	4"	4"	4"	4"	4"	4"	4"	4"
2366	2 3/4"	3 1/2"	4"	4"	4"	4"	4"	4"	4"	4"	4"
2648	2 3/4"	3 1/2"	4"	4"	4"	4"	4"	4"	4"	4"	4"
2931	3 1/2"	4"	4"	4"	4"	4"	4"	4"	4"	4"	4"
3249	3 1/2"	4"	4"	4"	4"	4"	4"	4"	4"	4"	4"
3531	3 1/2"	4"	4"	4"	4"	4"	4"	4"	4"	4"	4"

*Compressed Air Only

Stainless Steel Sizing Charts



145 PSI

Flow	Length										
	82ft	164ft	328ft	492ft	656ft	984ft	1312ft	1641ft	3281ft	4922ft	6562ft
8	1/2"	1/2"	1/2"	1/2"	1/2"	1/2"	1/2"	1"	1"	1"	1"
23	1/2"	1/2"	1"	1"	1"	1"	1"	1"	1"	1"	1"
32	1/2"	1"	1"	1"	1"	1"	1"	1"	1"	1 1/4"	1 1/4"
42	1"	1"	1"	1"	1"	1"	1"	1"	1 1/4"	1 1/4"	1 1/2"
62	1"	1"	1"	1"	1"	1"	1 1/4"	1 1/4"	1 1/2"	1 1/2"	1 1/2"
71	1"	1"	1"	1"	1"	1 1/4"	1 1/4"	1 1/4"	1 1/2"	1 1/2"	2"
88	1"	1"	1"	1"	1 1/4"	1 1/4"	1 1/4"	1 1/2"	1 1/2"	2"	2"
106	1"	1"	1"	1 1/4"	1 1/4"	1 1/4"	1 1/2"	1 1/2"	2"	2"	2"
124	1"	1"	1 1/4"	1 1/4"	1 1/4"	1 1/2"	1 1/2"	1 1/2"	2"	2"	2"
159	1"	1"	1 1/4"	1 1/4"	1 1/2"	1 1/2"	1 1/2"	2"	2"	2"	2 3/4"
212	1"	1 1/4"	1 1/2"	1 1/2"	1 1/2"	2"	2"	2"	2 3/4"	2 3/4"	2 3/4"
247	1 1/4"	1 1/4"	1 1/2"	1 1/2"	2"	2"	2"	2"	2 3/4"	2 3/4"	2 3/4"
300	1 1/4"	1 1/4"	1 1/2"	2"	2"	2"	2"	2 3/4"	2 3/4"	2 3/4"	2 3/4"
424	1 1/4"	1 1/2"	2"	2"	2"	2 3/4"	2 3/4"	2 3/4"	2 3/4"	3 1/2"	3 1/2"
530	1 1/2"	2"	2"	2"	2 3/4"	2 3/4"	2 3/4"	2 3/4"	3 1/2"	3 1/2"	3 1/2"
636	1 1/2"	2"	2"	2 3/4"	2 3/4"	2 3/4"	2 3/4"	2 3/4"	3 1/2"	4"	4"
742	1 1/2"	2"	2 3/4"	2 3/4"	2 3/4"	2 3/4"	2 3/4"	2 3/4"	3 1/2"	4"	4"
918	2"	2"	2 3/4"	2 3/4"	2 3/4"	2 3/4"	3 1/2"	3 1/2"	4"	4"	4"
1095	2"	2 3/4"	2 3/4"	2 3/4"	2 3/4"	3 1/2"	3 1/2"	3 1/2"	4"	4"	4"
1165	2"	2 3/4"	2 3/4"	2 3/4"	2 3/4"	3 1/2"	3 1/2"	4"	4"	4"	4"
1554	2 3/4"	2 3/4"	2 3/4"	3 1/2"	3 1/2"	4"	4"	4"	4"	4"	4"
1766	2 3/4"	2 3/4"	2 3/4"	3 1/2"	3 1/2"	4"	4"	4"	4"	4"	4"
2048	2 3/4"	2 3/4"	3 1/2"	3 1/2"	4"	4"	4"	4"	4"	4"	4"
2366	2 3/4"	2 3/4"	3 1/2"	4"	4"	4"	4"	4"	4"	4"	4"
2648	2 3/4"	2 3/4"	3 1/2"	4"	4"	4"	4"	4"	4"	4"	4"
2931	2 3/4"	3 1/2"	4"	4"	4"	4"	4"	4"	4"	4"	4"
3249	2 3/4"	3 1/2"	4"	4"	4"	4"	4"	4"	4"	4"	4"
3531	2 3/4"	3 1/2"	4"	4"	4"	4"	4"	4"	4"	4"	4"

*Compressed Air Only

Stainless Steel Sizing Charts



174 PSI

Flow	Length										
	82ft	164ft	328ft	492ft	656ft	984ft	1312ft	1641ft	3281ft	4922ft	6562ft
8	1/2"	1/2"	1/2"	1/2"	1/2"	1/2"	1/2"	1/2"	1"	1"	1"
23	1/2"	1/2"	1"	1"	1"	1"	1"	1"	1"	1"	1"
32	1/2"	1"	1"	1"	1"	1"	1"	1"	1"	1 1/4"	1 1/4"
42	1"	1"	1"	1"	1"	1"	1"	1"	1 1/4"	1 1/4"	1 1/4"
62	1"	1"	1"	1"	1"	1"	1"	1 1/4"	1 1/4"	1 1/2"	1 1/2"
71	1"	1"	1"	1"	1"	1"	1 1/4"	1 1/4"	1 1/2"	1 1/2"	1 1/2"
88	1"	1"	1"	1"	1"	1 1/4"	1 1/4"	1 1/4"	1 1/2"	1 1/2"	2"
106	1"	1"	1"	1"	1 1/4"	1 1/4"	1 1/4"	1 1/2"	1 1/2"	2"	2"
124	1"	1"	1"	1 1/4"	1 1/4"	1 1/4"	1 1/2"	1 1/2"	2"	2"	2"
159	1"	1"	1 1/4"	1 1/4"	1 1/4"	1 1/2"	1 1/2"	1 1/2"	2"	2"	2"
212	1"	1 1/4"	1 1/4"	1 1/2"	1 1/2"	1 1/2"	2"	2"	2"	2 3/4"	2 3/4"
247	1 1/4"	1 1/4"	1 1/4"	1 1/2"	1 1/2"	2"	2"	2"	2 3/4"	2 3/4"	2 3/4"
300	1 1/4"	1 1/4"	1 1/2"	1 1/2"	2"	2"	2"	2"	2 3/4"	2 3/4"	2 3/4"
424	1 1/4"	1 1/2"	2"	2"	2"	2"	2 3/4"	2 3/4"	2 3/4"	2 3/4"	3 1/2"
530	1 1/2"	1 1/2"	2"	2"	2"	2 3/4"	2 3/4"	2 3/4"	2 3/4"	3 1/2"	3 1/2"
636	1 1/2"	2"	2"	2"	2 3/4"	2 3/4"	2 3/4"	2 3/4"	3 1/2"	3 1/2"	3 1/2"
742	1 1/2"	2"	2"	2 3/4"	2 3/4"	2 3/4"	2 3/4"	2 3/4"	3 1/2"	3 1/2"	4"
918	2"	2"	2 3/4"	2 3/4"	2 3/4"	2 3/4"	2 3/4"	3 1/2"	3 1/2"	4"	4"
1095	2"	2"	2 3/4"	2 3/4"	2 3/4"	2 3/4"	3 1/2"	3 1/2"	4"	4"	4"
1165	2"	2"	2 3/4"	2 3/4"	2 3/4"	2 3/4"	3 1/2"	3 1/2"	4"	4"	4"
1554	2"	2 3/4"	2 3/4"	2 3/4"	3 1/2"	3 1/2"	3 1/2"	4"	4"	4"	4"
1766	2"	2 3/4"	2 3/4"	3 1/2"	3 1/2"	3 1/2"	4"	4"	4"	4"	4"
2048	2 3/4"	2 3/4"	2 3/4"	3 1/2"	3 1/2"	4"	4"	4"	4"	4"	4"
2366	2 3/4"	2 3/4"	3 1/2"	3 1/2"	4"	4"	4"	4"	4"	4"	4"
2648	2 3/4"	2 3/4"	3 1/2"	3 1/2"	4"	4"	4"	4"	4"	4"	4"
2931	2 3/4"	2 3/4"	3 1/2"	4"	4"	4"	4"	4"	4"	4"	4"
3249	2 3/4"	3 1/2"	3 1/2"	4"	4"	4"	4"	4"	4"	4"	4"
3531	2 3/4"	3 1/2"	4"	4"	4"	4"	4"	4"	4"	4"	4"

*Compressed Air Only

Stainless Steel Sizing Charts



189 PSI

Flow	Length										
	82ft	164ft	328ft	492ft	656ft	984ft	1312ft	1641ft	3281ft	4922ft	6562ft
8	1/2"	1/2"	1/2"	1/2"	1/2"	1/2"	1/2"	1/2"	1"	1"	1"
23	1/2"	1/2"	1/2"	1"	1"	1"	1"	1"	1"	1"	1"
32	1/2"	1"	1"	1"	1"	1"	1"	1"	1"	1"	1 1/4"
42	1/2"	1"	1"	1"	1"	1"	1"	1"	1 1/4"	1 1/4"	1 1/4"
62	1"	1"	1"	1"	1"	1"	1"	1 1/4"	1 1/4"	1 1/2"	1 1/2"
71	1"	1"	1"	1"	1"	1"	1 1/4"	1 1/4"	1 1/4"	1 1/2"	1 1/2"
88	1"	1"	1"	1"	1"	1 1/4"	1 1/4"	1 1/4"	1 1/2"	1 1/2"	2"
106	1"	1"	1"	1"	1 1/4"	1 1/4"	1 1/4"	1 1/4"	1 1/2"	2"	2"
124	1"	1"	1"	1 1/4"	1 1/4"	1 1/4"	1 1/4"	1 1/2"	1 1/2"	2"	2"
159	1"	1"	1 1/4"	1 1/4"	1 1/4"	1 1/2"	1 1/2"	1 1/2"	2"	2"	2"
212	1"	1"	1 1/4"	1 1/4"	1 1/2"	1 1/2"	1 1/2"	2"	2"	2 3/4"	2 3/4"
247	1"	1 1/4"	1 1/4"	1 1/2"	1 1/2"	1 1/2"	2"	2"	2"	2 3/4"	2 3/4"
300	1"	1 1/4"	1 1/2"	1 1/2"	1 1/2"	2"	2"	2"	2 3/4"	2 3/4"	2 3/4"
424	1 1/4"	1 1/2"	1 1/2"	2"	2"	2"	2"	2 3/4"	2 3/4"	2 3/4"	2 3/4"
530	1 1/4"	1 1/2"	2"	2"	2"	2 3/4"	2 3/4"	2 3/4"	2 3/4"	2 3/4"	3 1/2"
636	1 1/2"	1 1/2"	2"	2"	2"	2 3/4"	2 3/4"	2 3/4"	2 3/4"	3 1/2"	3 1/2"
742	1 1/2"	2"	2"	2"	2 3/4"	2 3/4"	2 3/4"	2 3/4"	3 1/2"	3 1/2"	4"
918	1 1/2"	2"	2"	2 3/4"	2 3/4"	2 3/4"	2 3/4"	2 3/4"	3 1/2"	4"	4"
1095	2"	2"	2 3/4"	2 3/4"	2 3/4"	2 3/4"	3 1/2"	3 1/2"	4"	4"	4"
1165	2"	2"	2 3/4"	2 3/4"	2 3/4"	2 3/4"	3 1/2"	3 1/2"	4"	4"	4"
1554	2"	2 3/4"	2 3/4"	2 3/4"	2 3/4"	3 1/2"	4"	4"	4"	4"	4"
1766	2"	2 3/4"	2 3/4"	2 3/4"	3 1/2"	3 1/2"	4"	4"	4"	4"	4"
2048	2 3/4"	2 3/4"	2 3/4"	3 1/2"	3 1/2"	4"	4"	4"	4"	4"	4"
2366	2 3/4"	2 3/4"	2 3/4"	3 1/2"	3 1/2"	4"	4"	4"	4"	4"	4"
2648	2 3/4"	2 3/4"	3 1/2"	3 1/2"	4"	4"	4"	4"	4"	4"	4"
2931	2 3/4"	2 3/4"	3 1/2"	3 1/2"	4"	4"	4"	4"	4"	4"	4"
3249	2 3/4"	2 3/4"	3 1/2"	4"	4"	4"	4"	4"	4"	4"	4"
3531	2 3/4"	3 1/2"	3 1/2"	4"	4"	4"	4"	4"	4"	4"	4"

*Compressed Air Only

Stainless Steel Sizing Charts



232 PSI

Flow	Length										
	82ft	164ft	328ft	492ft	656ft	984ft	1312ft	1641ft	3281ft	4922ft	6562ft
8	1/2"	1/2"	1/2"	1/2"	1/2"	1/2"	1/2"	1/2"	1/2"	1"	1"
23	1/2"	1/2"	1/2"	1/2"	1"	1"	1"	1"	1"	1"	1"
32	1/2"	1/2"	1"	1"	1"	1"	1"	1"	1"	1"	1"
42	1/2"	1"	1"	1"	1"	1"	1"	1"	1"	1 1/4"	1 1/4"
62	1/2"	1"	1"	1"	1"	1"	1"	1"	1 1/4"	1 1/4"	1 1/2"
71	1"	1"	1"	1"	1"	1"	1"	1"	1 1/4"	1 1/2"	1 1/2"
88	1"	1"	1"	1"	1"	1"	1 1/4"	1 1/4"	1 1/4"	1 1/2"	1 1/2"
106	1"	1"	1"	1"	1"	1 1/4"	1 1/4"	1 1/4"	1 1/2"	1 1/2"	1 1/2"
124	1"	1"	1"	1"	1"	1 1/4"	1 1/4"	1 1/4"	1 1/2"	1 1/2"	2"
159	1"	1"	1"	1 1/4"	1 1/4"	1 1/4"	1 1/2"	1 1/2"	1 1/2"	2"	2"
212	1"	1"	1 1/4"	1 1/4"	1 1/4"	1 1/2"	1 1/2"	1 1/2"	2"	2"	2"
247	1"	1"	1 1/4"	1 1/4"	1 1/2"	1 1/2"	1 1/2"	2"	2"	2"	2 3/4"
300	1"	1 1/4"	1 1/4"	1 1/2"	1 1/2"	1 1/2"	2"	2"	2"	2 3/4"	2 3/4"
424	1 1/4"	1 1/4"	1 1/2"	1 1/2"	2"	2"	2"	2"	2 3/4"	2 3/4"	2 3/4"
530	1 1/4"	1 1/2"	1 1/2"	2"	2"	2"	2"	2 3/4"	2 3/4"	2 3/4"	2 3/4"
636	1 1/4"	1 1/2"	2"	2"	2"	2"	2 3/4"	2 3/4"	2 3/4"	2 3/4"	3 1/2"
742	1 1/2"	1 1/2"	2"	2"	2"	2 3/4"	2 3/4"	2 3/4"	2 3/4"	3 1/2"	3 1/2"
918	1 1/2"	2"	2"	2 3/4"	2 3/4"	2 3/4"	2 3/4"	2 3/4"	3 1/2"	3 1/2"	4"
1095	1 1/2"	2"	2"	2 3/4"	2 3/4"	2 3/4"	2 3/4"	2 3/4"	3 1/2"	3 1/2"	4"
1165	1 1/2"	2"	2"	2 3/4"	2 3/4"	2 3/4"	2 3/4"	2 3/4"	3 1/2"	4"	4"
1554	2"	2"	2 3/4"	2 3/4"	2 3/4"	2 3/4"	3 1/2"	3 1/2"	4"	4"	4"
1766	2"	2 3/4"	2 3/4"	2 3/4"	2 3/4"	3 1/2"	3 1/2"	3 1/2"	4"	4"	4"
2048	2"	2 3/4"	2 3/4"	2 3/4"	3 1/2"	3 1/2"	3 1/2"	4"	4"	4"	4"
2366	2"	2 3/4"	2 3/4"	2 3/4"	3 1/2"	3 1/2"	4"	4"	4"	4"	4"
2648	2 3/4"	2 3/4"	2 3/4"	3 1/2"	3 1/2"	4"	4"	4"	4"	4"	4"
2931	2 3/4"	2 3/4"	2 3/4"	3 1/2"	3 1/2"	4"	4"	4"	4"	4"	4"
3249	2 3/4"	2 3/4"	3 1/2"	3 1/2"	4"	4"	4"	4"	4"	4"	4"
3531	2 3/4"	2 3/4"	3 1/2"	3 1/2"	4"	4"	4"	4"	4"	4"	4"

*Compressed Air Only



Stainless Steel Installation and Assembly Guide



Operating Conditions, Safety Instructions & Installations in explosive environments.....	82
Expansion Loops and Compensators.....	83-84
Pipe Support	85
Tools	86-87
Overview.....	86
Inspection and maintenance.....	87
Installation	88-91
Pipe Preparation.....	88
Diameters 15 -35 mm / 1/2" - 1 1/4"	89
Diameters 42 - 54 mm / 1½" - 2"	90
Diameters 76 - 108 mm / 2¾" - 4"	91
Minimum distances and space requirements for pressing.....	92

Operating Conditions & Safety Instructions



OPERATING CONDITIONS

AIRnet stainless steel pipes and fittings are designed to convey compressed air and vacuum. The system can also be used for nitrogen, helium, argon, neon, xenon and krypton.

AIRnet stainless steel pipes and fittings must only be used within the pressure and temperature specifications referred to in the AIRnet Stainless Steel Component List.

AIRnet stainless steel pipes and fittings must be appropriately protected against violent impacts and wind gusts.

Ensure accessibility of the AIRnet system for possible future system expansion or maintenance.

AIRnet stainless steel pipes and fittings should not be used as support for electrical equipment or earth conductors.

AIRnet stainless steel pipes should never be directly connected to a source of vibrations (use hoses instead).

Pressure relief valves must be installed where needed to ensure that the system working pressure cannot exceed the maximum working pressure of AIRnet Stainless Steel.

AIRNET INSTALLATIONS IN EXPLOSIVE ENVIRONMENTS

Cutting, deburring and assembly of AIRnet stainless steel pipes can cre-

ate sparks. Necessary precautions in explosive atmospheres must be taken. AIRnet stainless steel installations in explosive environments must always be earthed. Bonding and earthing must be checked at frequent intervals to secure that the system cannot be electrically charged.

PURITY REMARKS

To guarantee the purity of the compressed air at the point of use:

- a system purge of at least 24h is highly recommended.
- a properly sized certified point-of-use filter is advised, depending on the application requirements.

AIRnet stainless steel cannot be allowed to convey any end products (food, beverage, pharmaceuticals, etc.)

SAFETY INSTRUCTIONS

Installation, adjustments and repair work of an AIRnet

system must be performed by authorized trained personnel.

Installers must use the necessary protection means (PPMs).

When working at heights, use a harness for personal protection, and ensure that tools are securely fastened to prevent them from falling.

Installers must comply to all local safety requirements

related to the application(s) in scope. Special care must

always be taken to prevent suffocation risks when working

with gases other than air.

Before any installation, adjustment, repair work or other non-routine checks, relieve the AIRnet system of pressure and effectively isolate the system from all sources of pressure.

Only genuine AIRnet parts should be used when installing, adjusting or repairing an AIRnet stainless steel system.

All plugs and caps must be removed before installing the AIRnet pipes.

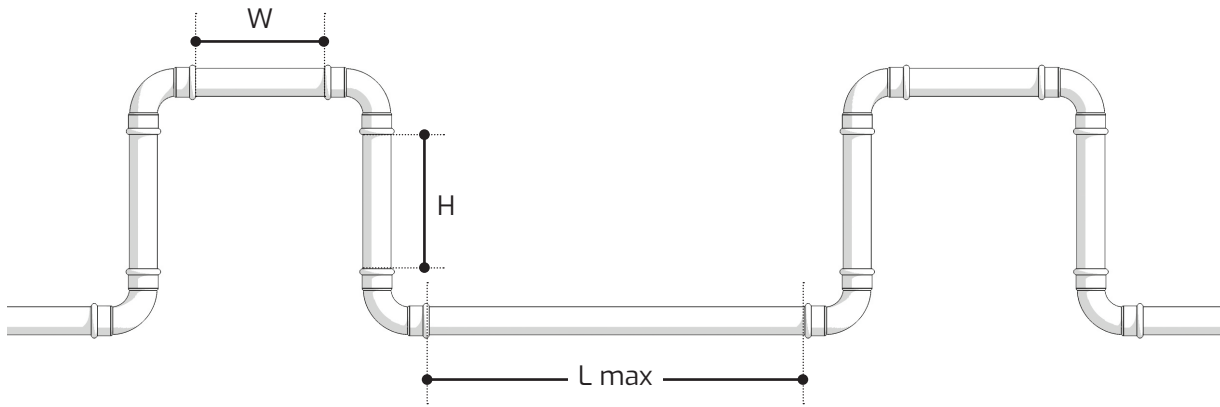
Check the surface of the AIRnet pipes before installing.

There should be no relevant scratches, abrasions, dents etc. Use only solvents or chemicals which do not damage the materials of AIRnet.

Before using the AIRnet stainless steel system, installers must ensure that all necessary test controls and applicable rules for the specific installation are complied with.

At initial startup of the AIRnet system, apply a test pressure of 21.8 PSI to identify leakage or imperfect joints. After performing an inspection, increase the pressure gradually and constantly (max 14.5 PSI every 30 seconds) and perform a second inspection for leakages or imperfect joints at the final pressure.

Expansion Loops and Compensators

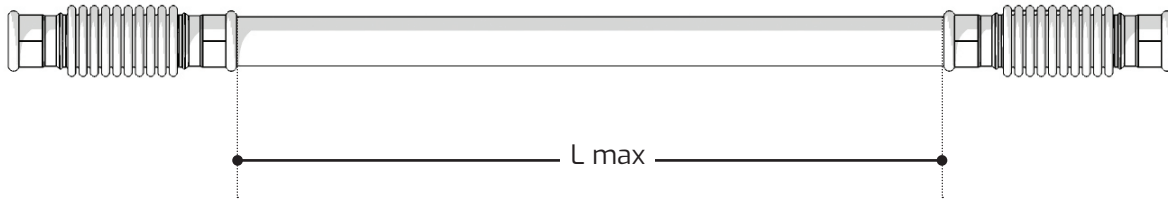


Long straight pipes will expand or contract due to temperature variations. To compensate for this effect, expansion loops or compensators are required. An expansion loop is a U-shaped construction that compensates the variation in length. Compensators are straight fittings specifically designed to allow axial movement. The number of expansion loops / compensators depends on the total length of the straight line and the maximum temperature variation.

The below table gives the maximum possible straight distance between two expansion loops with fixed piping vs. the temperature variation:

	Ø15 mm / 1/2"	Ø28 mm / 1"	Ø35 mm / 1 1/4"	Ø42 mm / 1 1/2"	Ø54 mm / 2"	Ø76 mm / 2 3/4"	Ø89 mm / 3 1/2"	Ø108 mm / 4"
H	0,75 m / 2,5 ft	1 m / 3,3 ft		1,25m / 4,1 ft		1,5 m / 5 ft		1,75 m / 5,75 ft
W	0,375 m / 1,25 ft	0,5 m / 1,6 ft		0,625m / 2 ft		0,75 m / 2,5 ft		0,875 m / 2,9 ft
Δt	Maximum distance between two expansion joints							
5°C / 9°F	726 m / 2383 ft	691 m / 2269 ft	553 m / 1815 ft	720 m / 2364 ft	560 m / 1838 ft	573 m / 1881 ft	489 m / 1606 ft	549 m / 1802 ft
10°C / 18°F	363 m / 1191 ft	345 m / 1134 ft	276 m / 907 ft	360 m / 1182 ft	280 m / 919 ft	286 m / 940 ft	244 m / 803 ft	274 m / 901 ft
20°C / 36°F	181 m / 595 ft	172 m / 567 ft	138 m / 453 ft	180 m / 591 ft	140 m / 459 ft	143 m / 470 ft	122 m / 401 ft	137 m / 450 ft
30°C / 54°F	121 m / 397 ft	115 m / 378 ft	92 m / 302 ft	120 m / 394 ft	93 m / 306 ft	95 m / 313 ft	81 m / 267 ft	91 m / 300 ft
40°C / 72°F	90 m / 297 ft	86 m / 283 ft	69 m / 226 ft	90 m / 295 ft	70 m / 229 ft	71 m / 235 ft	61 m / 200 ft	68 m / 225 ft
50°C / 90°F	72 m / 238 ft	69 m / 226 ft	55 m / 181 ft	72 m / 236 ft	56 m / 183 ft	57 m / 188 ft	48 m / 160 ft	54 m / 180 ft
60°C / 108°F	60 m / 198 ft	57 m / 189 ft	46 m / 151 ft	60 m / 197 ft	46 m / 153 ft	47 m / 156 ft	40 m / 133 ft	45 m / 150 ft
70°C / 126°F	51 m / 170 ft	49 m / 162 ft	39 m / 129 ft	51 m / 168 ft	40 m / 131 ft	40 m / 134 ft	34 m / 114 ft	39 m / 128 ft
80°C / 144°F	45 m / 148 ft	43 m / 141 ft	34 m / 113 ft	45 m / 147 ft	35 m / 114 ft	35 m / 117 ft	30 m / 100 ft	34 m / 112 ft
90°C / 162°F	40 m / 132 ft	38 m / 126 ft	30 m / 100 ft	40 m / 131 ft	31 m / 102 ft	31 m / 104 ft	27 m / 89 ft	30 m / 100 ft
100°C / 180°F	36 m / 119 ft	34 m / 113 ft	27 m / 90 ft	36 m / 118 ft	28 m / 91 ft 286 m / 940 ft	28 m / 94 ft	24 m / 80 ft	27 m / 90 ft

Expansion Loops and Compensators



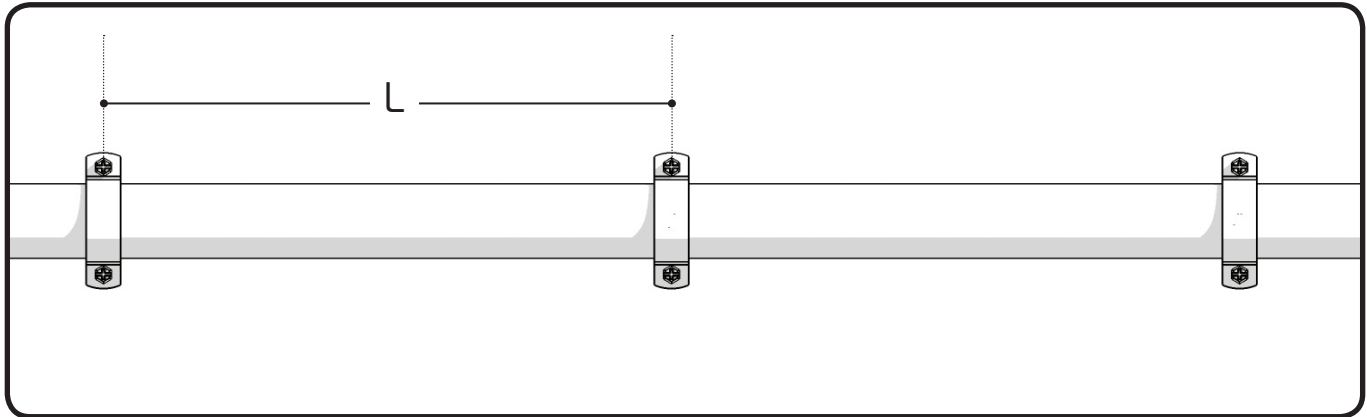
The table below gives the maximum possible straight distance between two compensators vs. the temperature variation:

Δt	$\text{Ø}15 \text{ mm} / 1/2''$	$\text{Ø}28 \text{ mm} / 1''$	$\text{Ø}35 \text{ mm} / 1 1/4''$	$\text{Ø}42 \text{ mm} / 1 1/2''$	$\text{Ø}54 \text{ mm} / 2''$
	Maximum distance between two compensators (1000 cycles max.)				
5°C / 9°F	193 m / 636 ft	266 m / 874 ft	315 m / 1033 ft	387 m / 1272 ft	436 m / 1431 ft
10°C / 18°F	96 m / 318 ft	133 m / 437 ft	157 m / 516 ft	193 m / 636 ft	218 m / 715 ft
20°C / 36°F	48 m / 159 ft	66 m / 218 ft	78 m / 258 ft	96 m / 318 ft	109 m / 357 ft
30°C / 54°F	32 m / 106 ft	44 m / 145 ft	52 m / 172 ft	64 m / 212 ft	72 m / 238 ft
40°C / 72°F	24 m / 79 ft	33 m / 109 ft	39 m / 129 ft	48 m / 159 ft	54 m / 178 ft
50°C / 90°F	19 m / 63 ft	26 m / 87 ft	31 m / 103 ft	38 m / 127 ft	43 m / 143 ft
60°C / 108°F	16 m / 53 ft	22 m / 72 ft	26 m / 86 ft	32 m / 106 ft	36 m / 119 ft
70°C / 126°F	13 m / 45 ft	19 m / 62 ft	22 m / 73 ft	27 m / 90 ft	31 m / 102 ft
80°C / 144°F	12 m / 39 ft	16 m / 54 ft	19 m / 64 ft	19 m / 64 ft	27 m / 89 ft
90°C / 162°F	10 m / 35 ft	14 m / 48 ft	17 m / 57 ft	21 m / 70 ft	24 m / 79 ft
100°C / 180°F	9 m / 31 ft	13 m / 43 ft	15 m / 51 ft	19 m / 63 ft	21 m / 71 ft

Example:

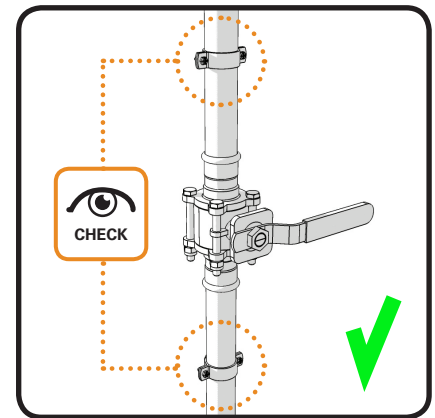
Consider an installation with a 100m / 328 ft straight line in 15mm / 1/2" pipe. The minimum temperature of the system is -20°C / -4°F in the winter, and the maximum temperature is 50°C / 122°F due to hot compressed air when the system is in use. The Δt is then 70°C / 126°F.

For this 100m / 328 ft straight line, this means that 1 expansion loop is required. This means that for this straight line, 7 compensators are required.



The maximum distance L between two pipe clips is given by the table below:

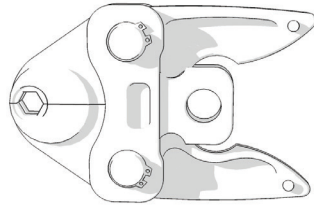
External Pipe Diameter (mm/inch)	Maximum distance (m/ft)
15 / ½"	1,5 / 5
28 / 1"	2,5 / 8
35 / 1 ¼"	2,5 / 8
42 / 1 ½"	3 / 10
54 / 2"	3,5 / 11,5
76 / 2 ¾"	4 / 13
89 / 3 ½"	4,5 / 14,5
108 / 4"	5 / 16



Valves must be supported by a pipe clip on both sides, with a maximum distance of 0.5m (20") between the valve and the pipe clips.

D15 - D35mm

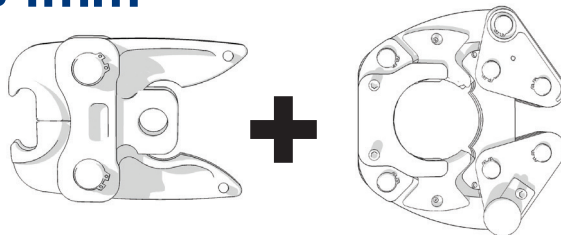
1/2" - 1 1/4"



D15 / 1/2" = 2812 1028 00
D28 / 1" = 2812 2028 00
D35 / 1 1/4" = 2812 3028 00

D42 - D54mm

1 1/2" - 2"

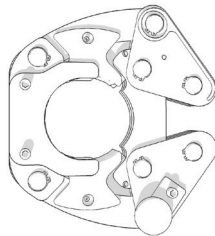


2812 4528 00

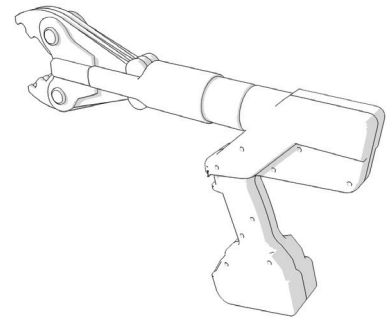
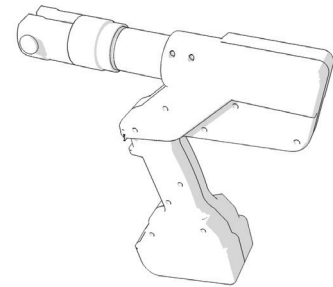
D42 / 1 1/2" = 2812 4028 00
D54 / 2" = 2812 5028 00

D76 - D108mm

2 3/4" - 4"



D76 / 2 3/4" = 2812 6028 00
D89 / 3 1/2" = 2812 7028 00
D108 / 4" = 2812 8028 00



Note: the AIRnet Stainless Steel System will only attain the designed pressure when installed using the tools in the table above. Using other tools is not recommend, as this may lower the pressure rating.

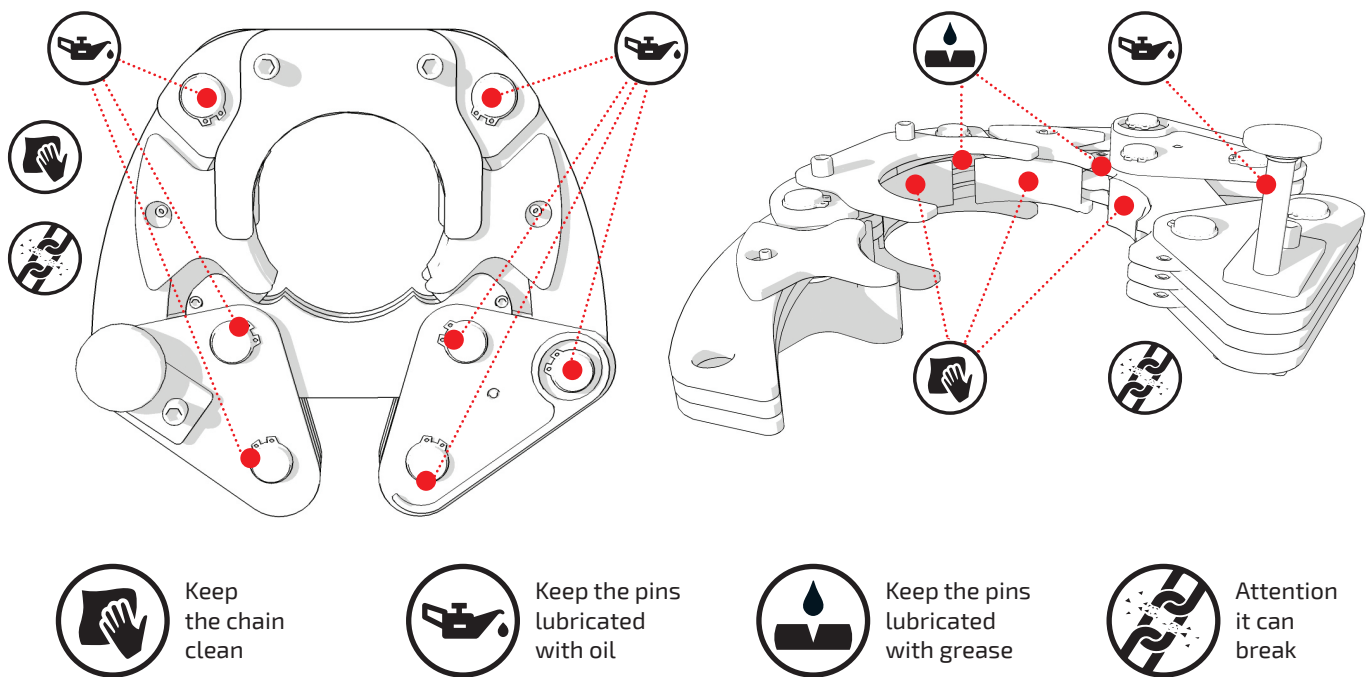
Tools - Inspection and Maintenance



To guarantee correct installation, the pressing tools must be checked regularly by an official authorized repairer according to the manufacturer specifications.

All moving parts and pressing surfaces must be cleaned and lubricated daily.

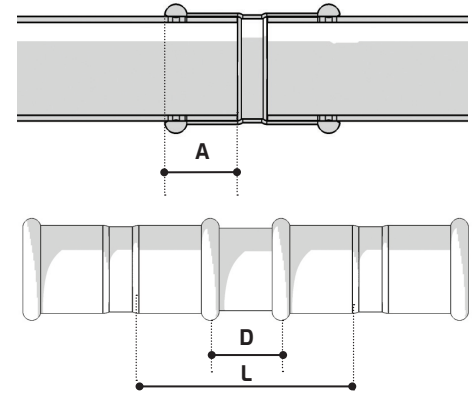
Before starting installation, make sure to inspect the tools thoroughly. Any possible oxidation, paint or dirt will affect the reliability, possibly resulting in sliding issues on the fittings during pressing.



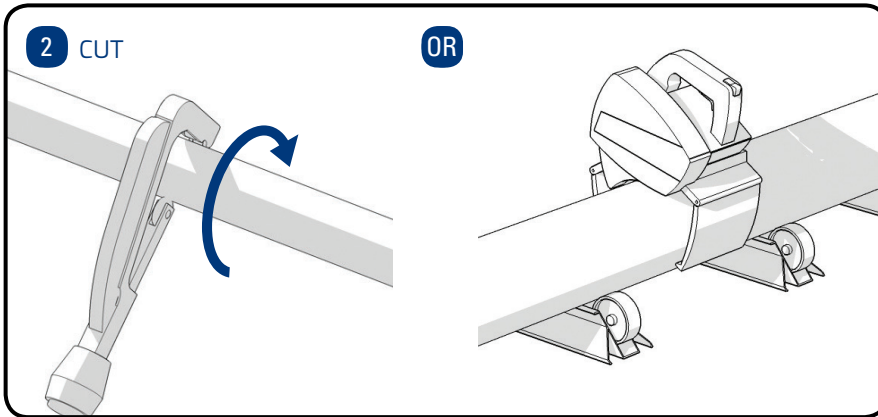
Installation - Pipe Preparation



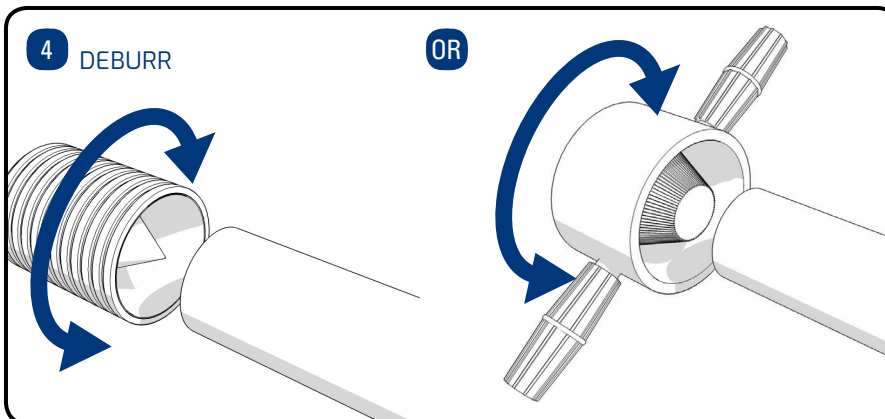
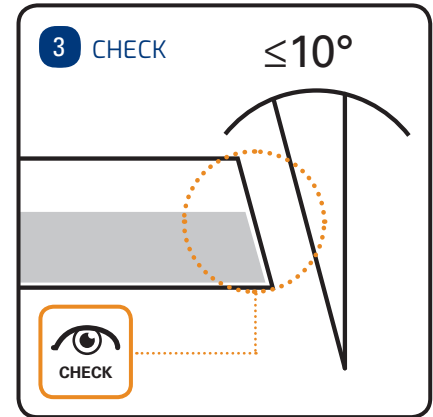
Pipe Outside Diameter (mm/inch)	A (mm/inch)	B (mm/inch)	C (mm/inch)
15 / 1/2"	20 / 13/16"	20 / 13/16"	60 / 2 3/8"
28 / 1"	23 / 15/16"	20 / 13/16"	66 / 2 5/8"
35 / 1 1/4"	26 / 1"	20 / 13/16"	72 / 2 13/16"
42 / 1 1/2"	30 / 1 3/16"	40 / 1 9/16"	100 / 5 1/2"
54 / 2"	35 / 1 3/8"	40 / 1 9/16"	110 / 4 5/16"
76 / 2 3/4"	55 / 2 3/16"	60 / 2 3/8"	170 / 6 11/16"
89 / 3 1/2"	60 / 2 3/8"	60 / 2 3/8"	180 / 7 1/16"
108 / 4"	75 / 2 15/16"	60 / 2 3/8"	210 / 8 1/4"



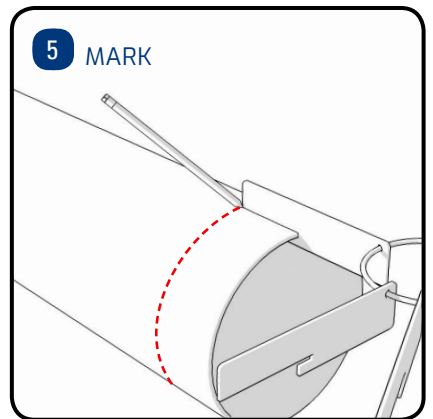
A = Insertion Depth
 D = Minimum Distance
 L = Minimum Pipe length Tube



Ø 15-54 mm 2810 0040 00 110/120V 2810 0640 80
 Ø 76-108 mm 2810 0140 00 220/230V 2810 0540 80



Ø 15-54 mm 2810 0141 00 Ø 76 - 108 mm 2810 0641 00

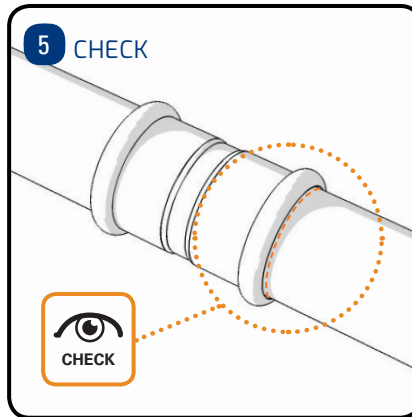
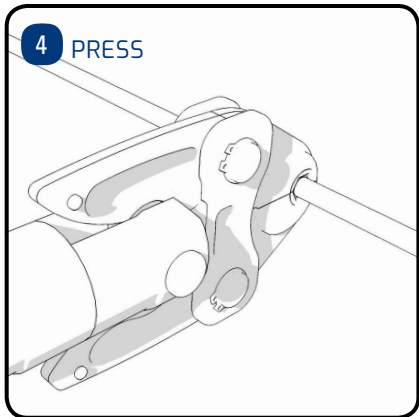
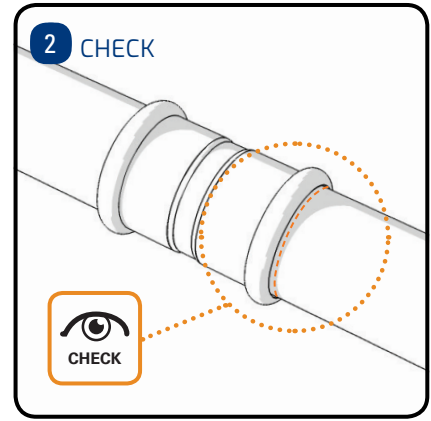
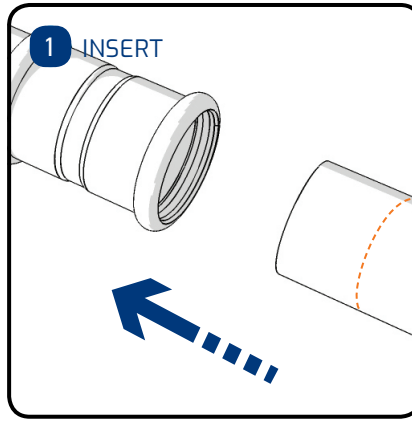


ALL 2812 0029 80

Installation - Press Fitting



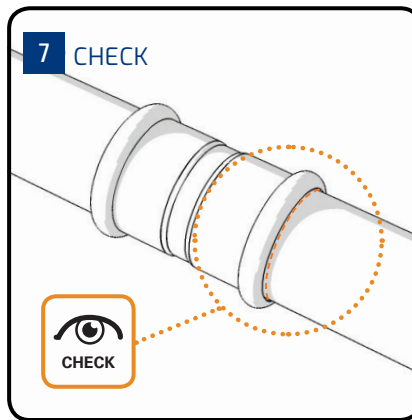
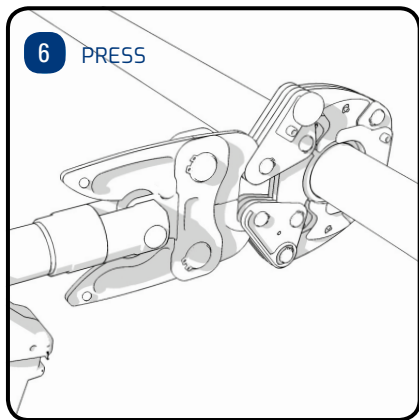
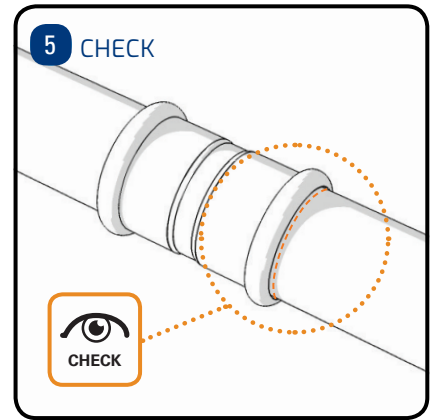
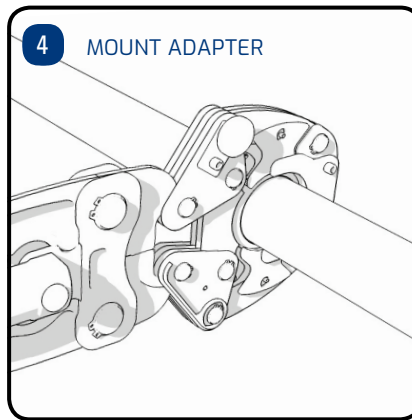
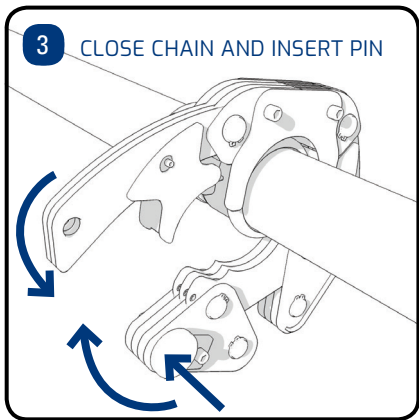
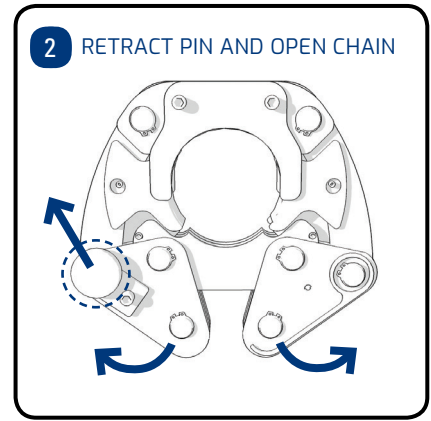
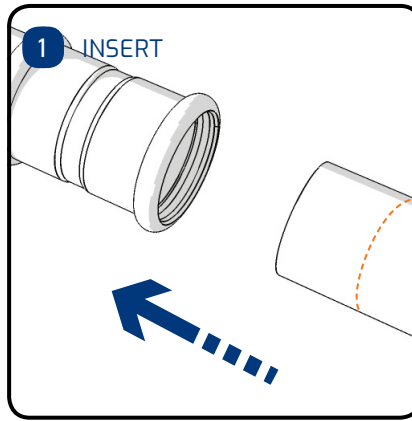
Diameters 15 - 35 mm / 1/2" - 1 1/4"



Installation - Press Fitting



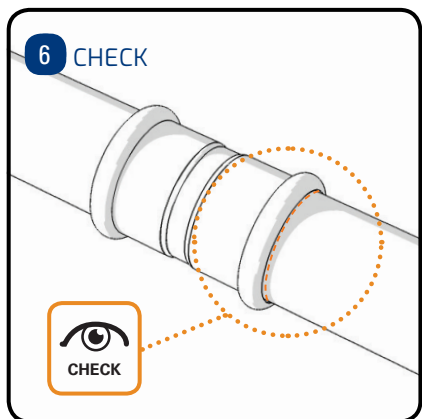
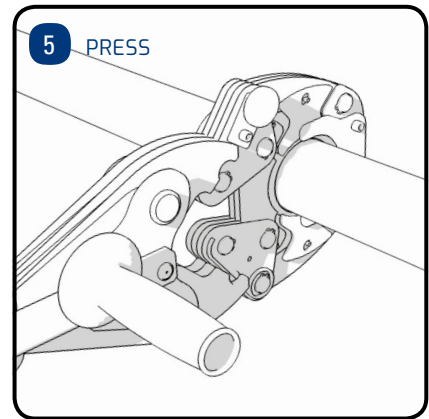
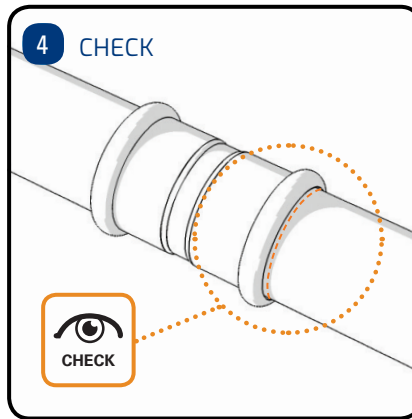
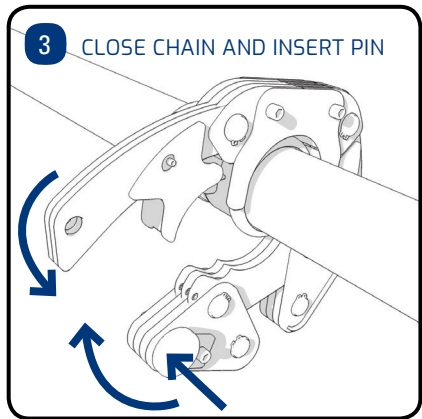
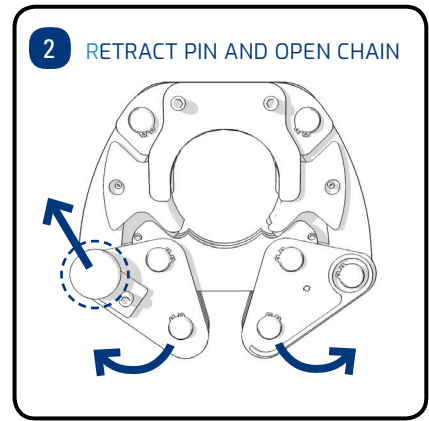
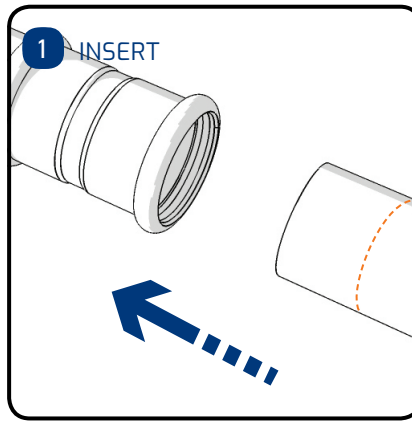
Diameters 42 - 54 mm / 1 1/2" - 2"



Installation - Press Fitting



Diameters 76 - 108 mm / 2 3/4" - 4"

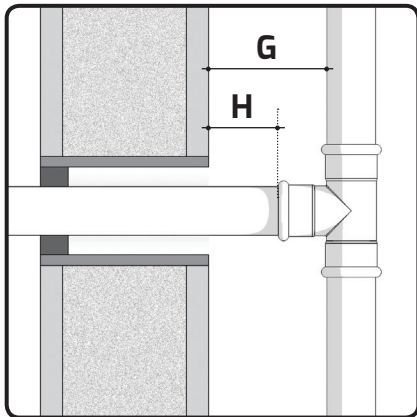
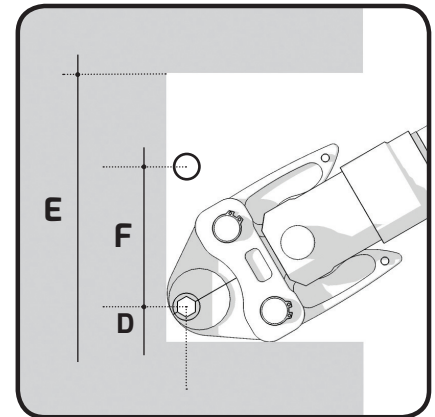
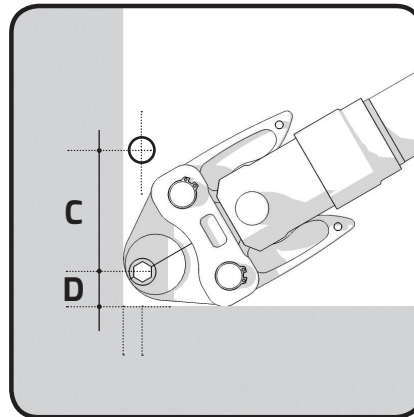
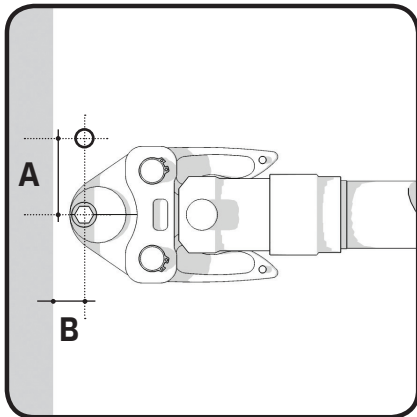


MINIMUM DISTANCES AND SPACE REQUIREMENTS



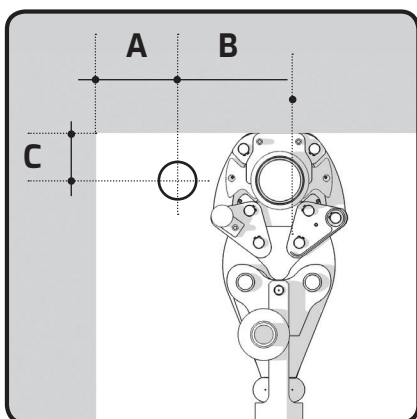
To carry out pressing correctly, there must be a minimum distance between the pipe and the building, and from pipe to pipe as shown in the tables below.

Minimum distances and space requirements D15 - D35 / 1/2" - 1 1/4"



diameter	A	B	C	D	E	F	G	H
D15 - 1/2"	56 mm 2 1/4"	30 mm 1 1/8"	75 mm 3"	35 mm 1 3/8"	155 mm 6 1/8"	95 mm 3 3/4"	60 mm 2 3/8"	40 mm 1 5/8"
D28 - 1"	82 mm 3 1/4"	40 mm 1 5/8"	90 mm 3 1/2"	45 mm 1 3/4"	180 mm 7 1/8"	90 mm 3 1/2"	63 mm 2 1/2"	40 mm 1 5/8"
D35 - 1 1/4"	85 mm 3 3/8"	40 mm 1 5/8"	90 mm 3 1/2"	45 mm 1 3/4"	180 mm 7 1/8"	90 mm 3 1/2"	66 mm 2 5/8"	40 mm 1 5/8"

Minimum distances and space requirements D42 - D108 / 1 1/2" - 4"



diameter	A	B	C
D42 - 1 1/2"	150 mm 5 7/8"	150 mm 5 7/8"	110 mm 4 3/8"
D54 - 2"	150 mm 5 7/8"	150 mm 5 7/8"	110 mm 4 3/8"
D76 - 2 3/4"	170 mm 6 3/4"	210 mm 8 1/4"	170 mm 6 3/4"
D89 - 3 1/2"	190 mm 7 1/2"	260 mm 10 1/4"	190 mm 7 1/2"
D108 - 4"	200 mm 7 7/8"	320 mm 12 5/8"	280 mm 11"

In line with the high quality performance of the AIRnet product range, we provide our customers with a 10 year guarantee on the AIRnet aluminum & stainless steel range of pipes & fittings against any damages resulting from material defect.

- ✔ Use only genuine parts.
- ✔ Perform installation according to our instructions and guidelines.
- ✔ Never use the components below or in excess of its limit ratings.
- ✔ Protect your installation against shocks or vibrations, corrosive environments.
- ✔ Damaged parts and/or site conditions must be submitted for inspection, prior to the settlement of any claim.
- ✔ AIRnet warranty is restricted to component replacement only.
- ✔ Claims should be addressed to any Customer Center or Authorized distribution network according to the standard procedure.
- ✔ This 10 year guarantee is limited to providing you with a new AIRnet fitting or pipe and is subject to our determination that the fitting or pipe failed exclusively due to a defect in the material during the production period.
- ✔ The Point of use accessories will have a guarantee of 18 months from the date of supply or 12 months from the date of installation.



AIRnet 10 year Limited Warranty

Quincy Compressor warrants that any and all AIRnet Products delivered by Quincy Compressor are delivered free of defects in material and workmanship. Unless specified otherwise by Quincy Compressor in its written quotation regarding the particular Product, the above-stated limited warranty shall expire ten years from the date of installation by authorized Quincy Compressor personnel. Notwithstanding the foregoing, in the event the Product is a part (spare part/replacement part), the above-stated warranty shall expire on the last day of the original ten year period. The warranty expressly excludes the effects of normal wear and tear.

If Products do not meet the above-stated warranties, Buyer shall promptly notify Quincy Compressor in writing. Quincy Compressor shall at its option (i) replace the defective Product or (ii) repair the defective Product. Quincy Compressor will determine at its sole discretion which option Quincy Compressor will take.

Quincy Compressor warrants that any service performed by Quincy Compressor is performed in a workmanlike manner. If Quincy Compressor provides parts in connection with the service, Quincy Compressor warrants that the parts are free of defects in material and workmanship. If service (and/or parts provided in connection therewith) does not meet the above-stated warranties, Buyer shall promptly notify Quincy Compressor in writing. Quincy Compressor shall at its option re-perform the non-conforming portion of the service and (if applicable) repair or (at Quincy Compressor's option) replace the nonconforming part. Quincy Compressor will determine at its sole discretion which of the above-mentioned options Quincy Compressor will take.

Warranty repair or replacement or re-performed service shall not extend or renew the original warranty period; such Products or parts or service shall remain under warranty only for the unexpired portion of the original warranty period. Replaced Products/parts become the property of Quincy Compressor.

Quincy Compressor warrants that Quincy Compressor has good and marketable title to the Products delivered by Quincy Compressor. Quincy Compressor is excused and not obligated to perform on its limited warranty due to any cause beyond its reasonable control (including but not limited to acts of God, strike or other concerted action of workmen, act or omission of any governmental authority, act of war or terrorism, act of the public enemy, embargo, delays of carriers, and/or delays by its usual suppliers).

NOTWITHSTANDING ANYTHING ELSE, UNDER NO CIRCUMSTANCES SHALL QUINCY COMPRESSOR BE LIABLE FOR ANY CONSEQUENTIAL, INDIRECT, INCIDENTAL, OR SPECIAL DAMAGES (INCLUDING BUT NOT LIMITED TO LOSS OF PROFITS OR REVENUE, LOSS OF TOTAL OR PARTIAL USE OF PRODUCTS OR SERVICES, DOWNTIME COSTS, AND DELAY COSTS), EVEN IF ADVISED OF THE POSSIBILITY OF SUCH DAMAGES OR IF SUCH DAMAGES ARE FORESEEABLE (regardless of whether such damages are characterized as arising out of breach of warranty, tort, contract, or otherwise)

THE FOREGOING WARRANTIES ARE EXCLUSIVE AND IN LIEU OF ALL OTHER WARRANTIES (WRITTEN, ORAL, IMPLIED, OR OTHERWISE), AND ALL OTHER WARRANTIES, INCLUDING BUT NOT LIMITED TO ANY IMPLIED WARRANTIES OF MERCHANTABILITY OR FITNESS FOR A PARTICULAR PURPOSE, ARE HEREBY EXPRESSLY DISCLAIMED. CORRECTION OF NONCONFORMITIES (i.e. warranty repair or replacement or refund or credit, all at Quincy Compressor's option, of Products that do not conform to the Product warranty above, and re-performance or refund or credit, all at Quincy Compressor's option, of service that does not conform to the service warranty above) IN THE MANNER AND WITHIN THE APPLICABLE WARRANTY PERIOD SET FORTH ABOVE PROVIDES THE EXCLUSIVE REMEDIES WITH RESPECT TO THE QUALITY OF OR ANY DEFECT IN PRODUCTS OR SERVICES DELIVERED OR PERFORMED HEREUNDER.



Guaranteed!

In line with the high quality performance of AIRnet product range we provide our customers with a 10-year guarantee.

To achieve the lowest Total Cost of Ownership Quincy Compressor offers

- ✓ High Quality Materials
- ✓ Optimal Operational Performance
- ✓ Low Operational Costs
- ✓ Low Installation Costs
- ✓ Low Modification Costs
- ✓ Safety



Performance You Demand. Reliability You Trust.™

701 N. Dobson Avenue | Bay Minette, AL 36507
Phone 251.937.5900 | Fax 251.937.0872
Email: info@quincycompressor.com
QuincyCompressor.com